

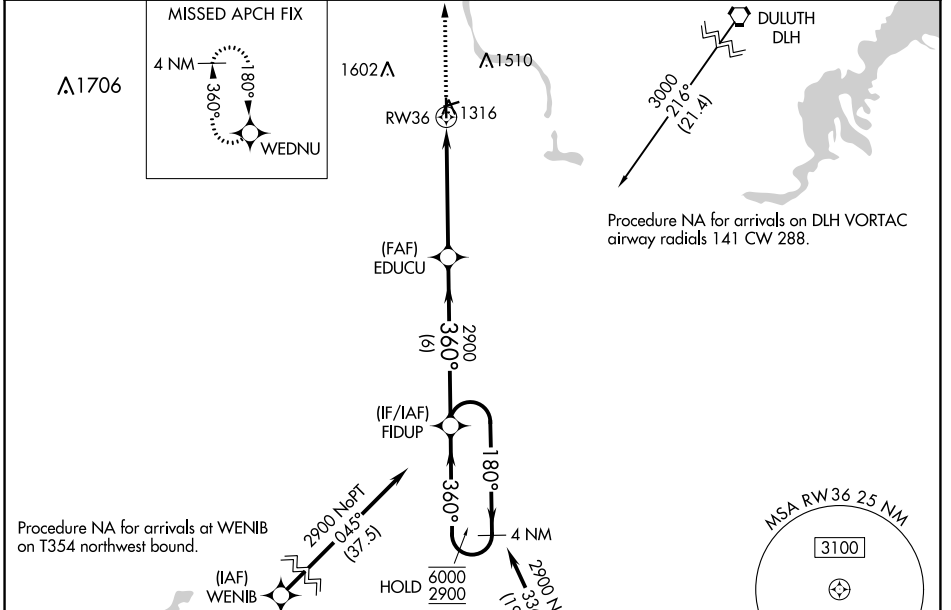
WAAS CH <b>82429</b> W <b>36A</b>	APP CRS <b>360°</b>	Rwy Idg TDZE Apt Elev	<b>4002</b> <b>1279</b> <b>1279</b>
---	------------------------	-----------------------------	---

# RNAV (GPS) RWY 36

CLOQUET/CARLTON COUNTY (COQ)

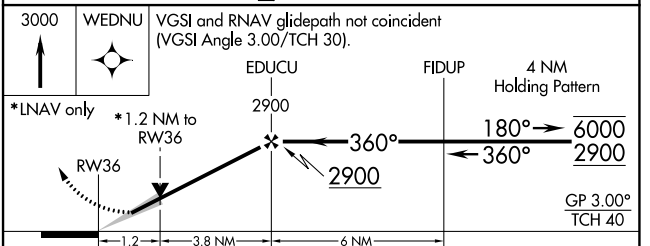
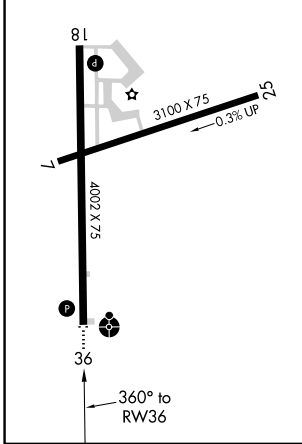
RNP APCH.	ODALS 	MISSED APPROACH: Climb to 3000 direct WEDNU and hold.
-----------	-----------	---

AWOS-3 <b>118.525</b>	DULUTH APP CON <b>125.45 233.7</b>	CINC DEL <b>122.15</b>	UNICOM <b>122.8 (CTAF)</b>
--------------------------	---------------------------------------	---------------------------	-------------------------------



ELEV 1279	TDZE 1279
-----------	-----------

MIRL Rwy 7-25 and 18-36  
REIL Rwy 18 and 36



CATEGORY	A	B	C	D
LPV DA		1529-1 250 (300-1)		NA
LNAV/VNAV DA		1580-1 301 (400-1)		NA
LNAV MDA	1680-1	401 (500-1)	1680-1 1/8 401 (500-1 1/8)	NA
CIRCLING	1740-1 461 (500-1)	1860-1 581 (600-1)	1920-1 3/4 641 (700-1 3/4)	NA

NC-1, 05 SEP 2024 to 03 OCT 2024

NC-1, 05 SEP 2024 to 03 OCT 2024