

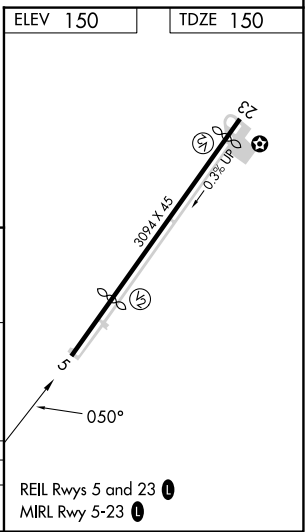
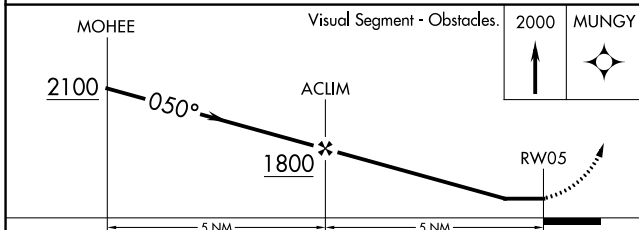
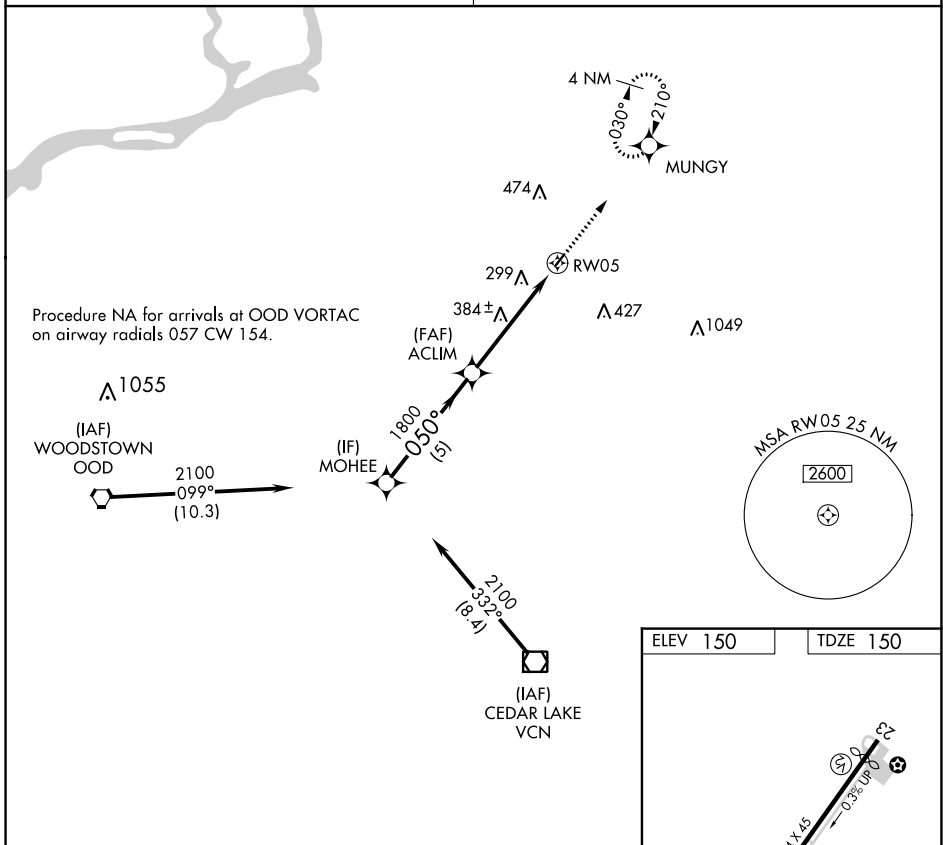
APP CRS	Rwy Idg	2354
050°	TDZE	150
	Apt Elev	150

RNAV (GPS) RWY 5

PINE VALLEY (19N)

RNP APCH.	MISSED APPROACH: Climb to 2000 direct MUNGY and hold.
<p>▼ Rwy 5 helicopter visibility reduction below 1 SM NA.</p> <p>▲ NA Procedure NA at night. Use Mount Holly altimeter setting; when not received use Philadelphia Intl altimeter setting and increase all MDA 20 feet.</p>	

MC GUIRE APP CON 126.475 363.8	UNICOM 123.0 (CTAF) 1
--	---------------------------------



CATEGORY	A	B	C	D
LNAV MDA	740-1	590 (600-1)	NA	

NE-2, 05 SEP 2024 to 03 OCT 2024

NE-2, 05 SEP 2024 to 03 OCT 2024