

FORT BELVOIR, VIRGINIA

ILS or LOC RWY 32

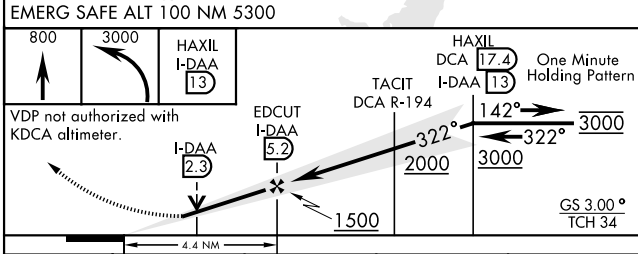
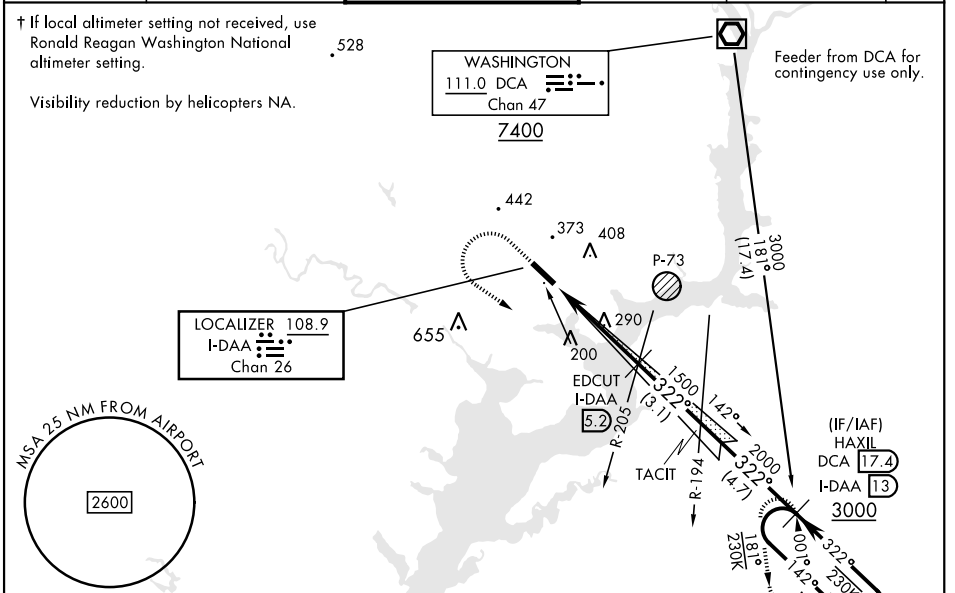
LOC/DME I-DAA 108.9 Chan 26	APCH CRS 322°	Rwy Ildg TDZE Arpt Elev 4529 68 74
---	-------------------------	--

[USA]

DAVISON AAF (KDAV)

RADAR required	MALSF 	MISSED APPROACH: Climb to 800, then climbing left turn to 3000 direct to HAXIL (DCA R-181/17.4 DME) and hold. Continue climb in hold to 3000.
<p>▼ * When ALS inop, increase RVR to 45, vis to 7/8 mile. ** When ALS inop, increase CAT AB RVR to 55, vis to 1 mile, CAT CD vis to 1 1/8 miles. *** When ALS inop, increase CAT AB RVR to 55, vis to 1 mile, CAT CD vis to 1 1/8 miles.</p>		

ATIS 128.175	POTOMAC APP CON 118.95 319.1	TOWER ★ 124.275 (CTAF) 0 229.4	GND CON 121.9 351.8	CLNC DEL 351.8	PAR
------------------------	--	---	-------------------------------	--------------------------	-----



ELEV 74	TDZE 68
Rwy 14 Ildg 4930' Rwy 32 Ildg 4529'	

CATEGORY	A	B	C	D
S-ILS 32*	348/40 280		(300-3/4)	
S-LOC 32**	580/40	512 (600-3/4)	580-1 1/4	512 (600-1 1/4)
CIRCLING	680-1	720-1	760-2	1000-3
	606 (700-1)	646 (700-1)	686 (700-2)	926 (1000-3)
† RONALD REAGAN WASHINGTON NATIONAL ALTIMETER SETTING MINIMUMS				
S-ILS 32	388/40 320		(400-3/4)	
S-LOC 32***	620/40	552 (600-3/4)	620-1 1/8	552 (600-1 1/8)
CIRCLING	720-1	760-1	800-2	1040-3
	646 (700-1)	686 (700-1)	726 (800-2)	966 (1000-3)

HIRL Rwy 14-32	FAF to MAP 4.4 NM				
Knots	60	90	120	150	180
Min:Sec	4:24	2:56	2:12	1:46	1:28

FORT BELVOIR, VIRGINIA
Orig 05SEP24

38°43'N-77°11'W

DAVISON AAF (KDAV)

ILS or LOC RWY 32

NE-3, 05 SEP 2024 to 03 OCT 2024

NE-3, 05 SEP 2024 to 03 OCT 2024