

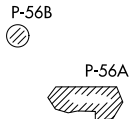
JDUBB FOUR DEPARTURE (RNAV)

ATIS
128.175
CLNC DEL
351.8
GND CON
121.9 351.8
DAVISON TOWER ★
124.275 (CTAF) 229.4
POTOMAC DEP CON
118.95 257.2

**TOP ALTITUDE:
3000**

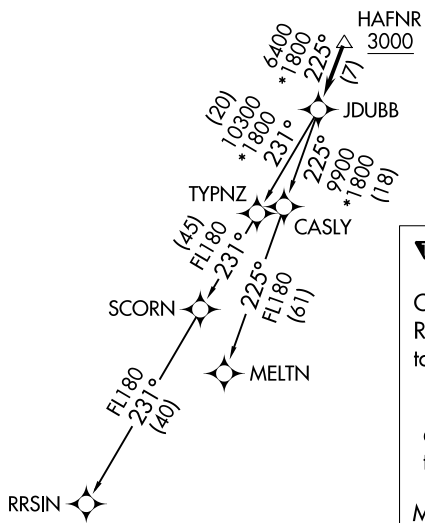
TAKEOFF MINIMUMS:

Rwy 14: Standard.
Rwy 32: 400-2 or standard with minimum
climb of 300' per NM to 500.



NE-3, 05 SEP 2024 to 03 OCT 2024

NE-3, 05 SEP 2024 to 03 OCT 2024



NOTE: RNAV 1.
NOTE: RADAR required.
NOTE: DME/DME/IRU or GPS required.
NOTE: Turbo-jets only.

▼ DEPARTURE ROUTE DESCRIPTION

Climb on heading assigned by ATC, expect RADAR vectors to HAFNR, then on track 225° to JDUBB, thence....

....on assigned transition, maintain 3000, expect clearance to filed altitude within ten (10) minutes after departure.

MELTN TRANSITION (JDUBB4.MELTN)
RRSIN TRANSITION (JDUBB4.RRSIN)

NOTE: Chart not to scale.