

FORT BELVOIR, VIRGINIA

RNAV (GPS) RWY 32

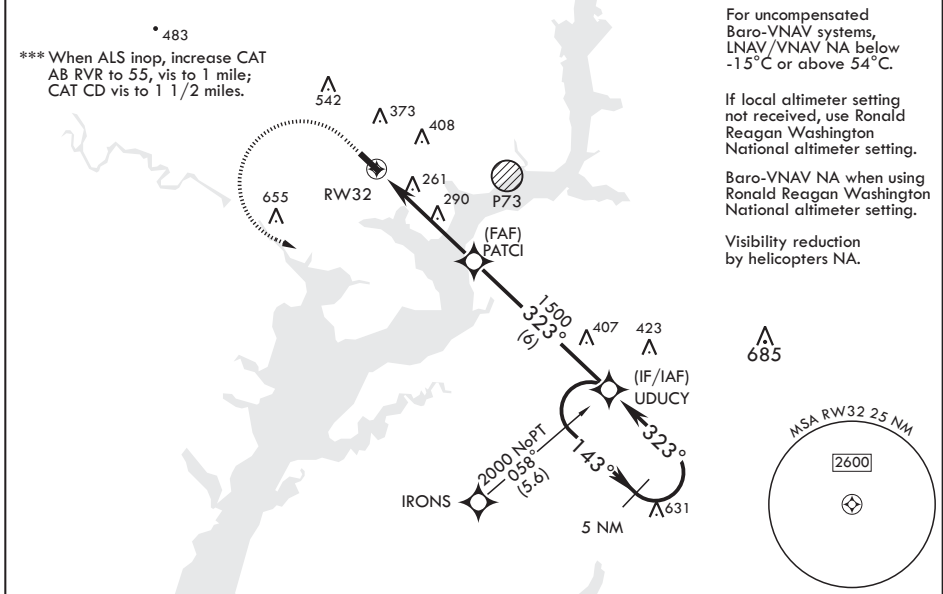
WAAS CH 91281 W32A	APCH CRS 323°	Rwy ldg TDZE 68	4529
		Arprt Elev	74

-(USA)

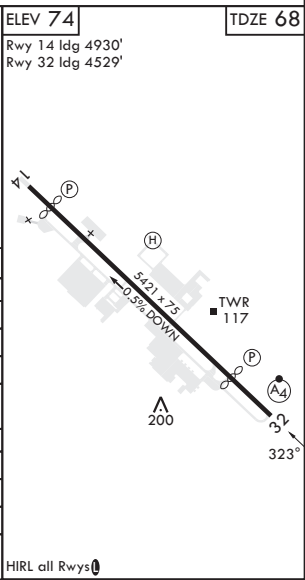
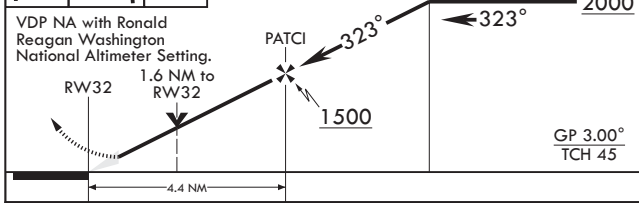
DAVISON AAF (KDAV)

RNP APCH-GPS	MALS (A4)	MISSED APPROACH: Climb to 600 then climbing left turn to 2000 direct UDCY and hold.
* When ALS inop, increase RVR to 45, vis to 7/8 mile. ** When ALS inop, increase vis to 1 3/8 miles.		

ATIS 128.175	POTOMAC APP CON 118.95 319.1	TOWER * 124.275 (CTAF) 0 229.4	GND CON 121.9 351.8	CLNC DEL 351.8	PAR
-----------------	---------------------------------	-----------------------------------	------------------------	-------------------	-----



600	2000	UDUCY	VGSI and RNAV GP not coincident (VGSI Angle 3.00/TCH 35).	UDUCY	5 NM Holding Pattern	ELEV 74	TDZE 68
crs 322°					143°	Rwy 14 ldg 4930'	Rwy 32 ldg 4529'



CATEGORY	A	B	C	D
LPV DA*	351/40	283	(300-¾)	
LNAV/VNAV DA**	481/50	413	(500-1)	
LNAV MDA***	540/40	472 (500-¾)	540/60	472 (500-1½)
CIRCLING	700-1	740-1	800-2	1000-3
	626 (700-1)	666 (700-1)	726 (800-2)	926 (1000-3)
RONALD REAGAN WASHINGTON NATIONAL ALTIMETER MINIMUMS				
LPV DA*	384/40	316	(400-¾)	
LNAV/VNAV DA	514/55	446	(500-1)	
LNAV MDA***	580/40	512 (600-¾)	580-1¼	512 (600-1¼)
CIRCLING	720-1	780-1	820-2¼	1040-3
	646 (700-1)	706 (800-1)	746 (800-2¼)	966 (1000-3)

FORT BELVOIR, VIRGINIA 38°43'N - 77°11'W DAVISON AAF (KDAV)

Amdt 4 30NOV23

RNAV (GPS) RWY 32

NE-3, 05 SEP 2024 to 03 OCT 2024

NE-3, 05 SEP 2024 to 03 OCT 2024