

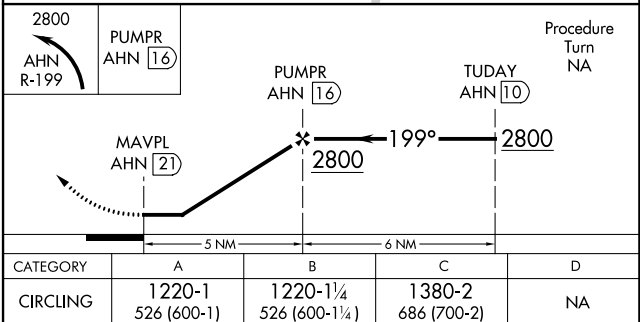
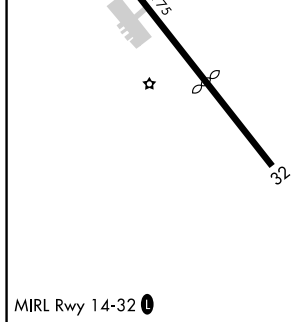
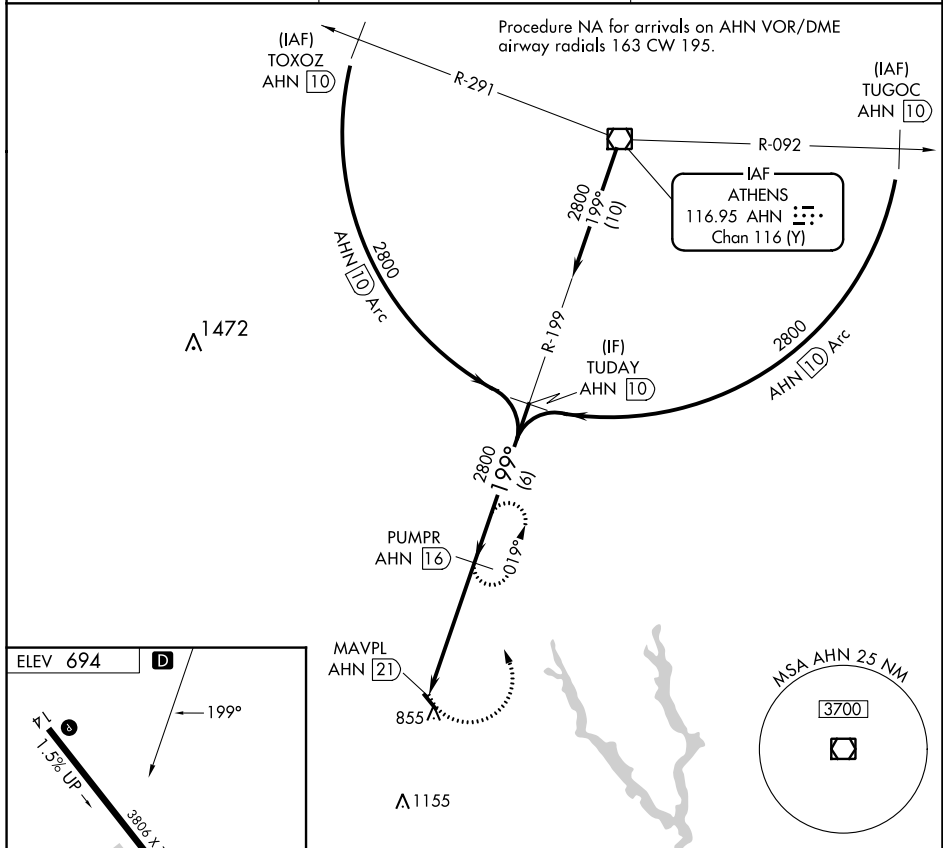
VOR/DME AHN <b>116.95</b> Chan <b>116 (Y)</b>	APP CRS <b>199°</b>	Rwy Idg TDZE Apt Elev <b>N/A</b> <b>694</b>
---	------------------------	--

# VOR/DME-A

MADISON MUNI (52A)

<p>▼ Procedure NA at night. ▲ NA Use Athens altimeter setting. Visibility reduction by helicopters NA.</p>	<p>MISSED APPROACH: Climbing left turn to 2800 on AHN VOR/DME R-199 to PUMPR/AHN 16 DME and hold.</p>
--	---

AHN ASOS <b>132.875</b>	ATLANTA APP CON ★ <b>132.475 291.1</b>	UNICOM <b>122.8 (CTAF)</b>
----------------------------	---	-------------------------------



SE-4, 05 SEP 2024 to 03 OCT 2024

SE-4, 05 SEP 2024 to 03 OCT 2024