

| | | |
|--|------------------------|--|
| VORTAC LFT 109.8 Chan 35 | APP CRS 017° | Rwy Idg TDZE Apt Elev N/A N/A 16 |
|--|------------------------|--|

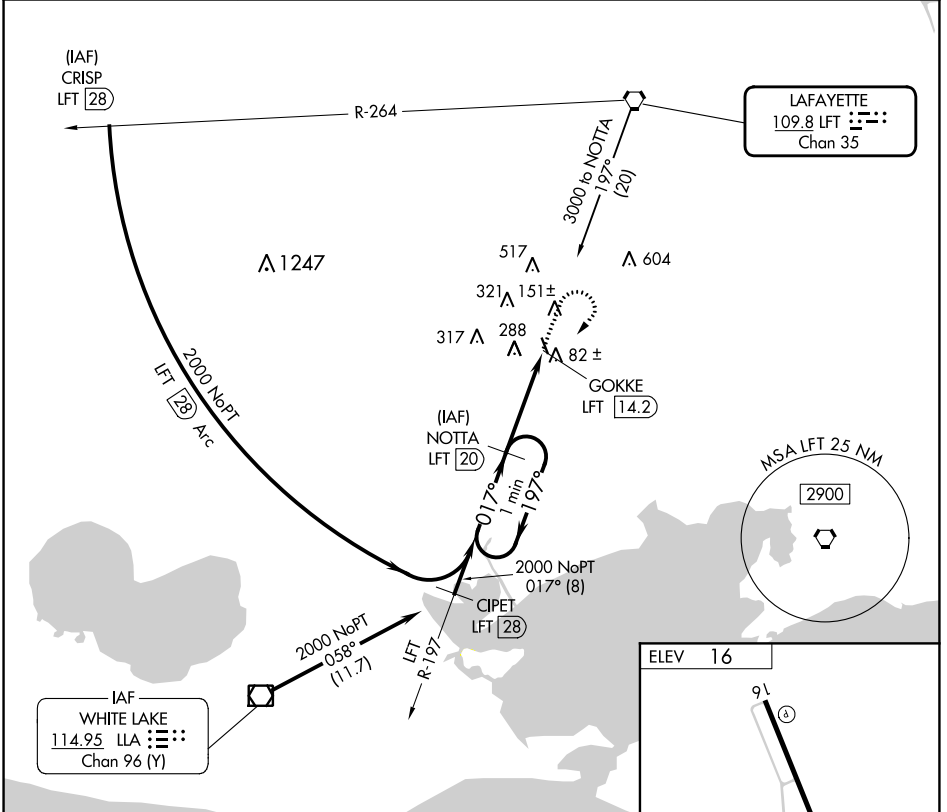
VOR/DME-B

ABBEVILLE CHRIS CRUSTA MEML (1YA)

NA When local altimeter setting not received, use New Iberia altimeter setting and increase all MDA 40 feet.

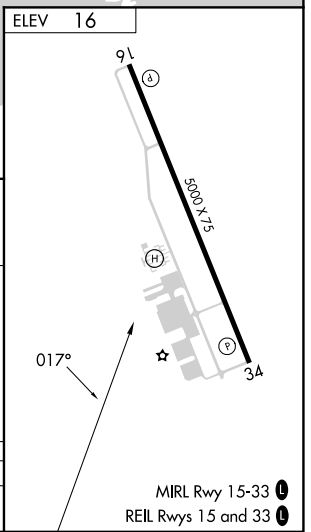
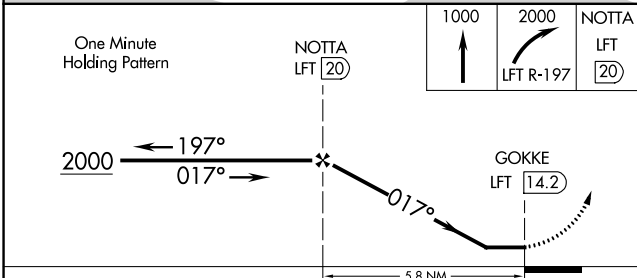
MISSED APPROACH: Climb to 1000, then climbing right turn to 2000 via LFT R-197 to NOTTA/LFT 20 DME and hold.

| | | | |
|----------------------------|---|-----------------------|--|
| AWOS-3PT 118.875 | LAFAYETTE APP CON ★ 121.1 268.7 | GCO 135.075 | UNICOM 122.8 (CTAF) 0 |
|----------------------------|---|-----------------------|--|



SC-4, 05 SEP 2024 to 03 OCT 2024

SC-4, 05 SEP 2024 to 03 OCT 2024



| CATEGORY | A | B | C | D |
|-------------------|-------|-------------|----------------------|----|
| C CIRCLING | 600-1 | 584 (600-1) | 700-2 684 (700-2) | NA |