

APP CRS 036°	Rwy Idg 3900
	TDZE 833
	Apt Elev 833

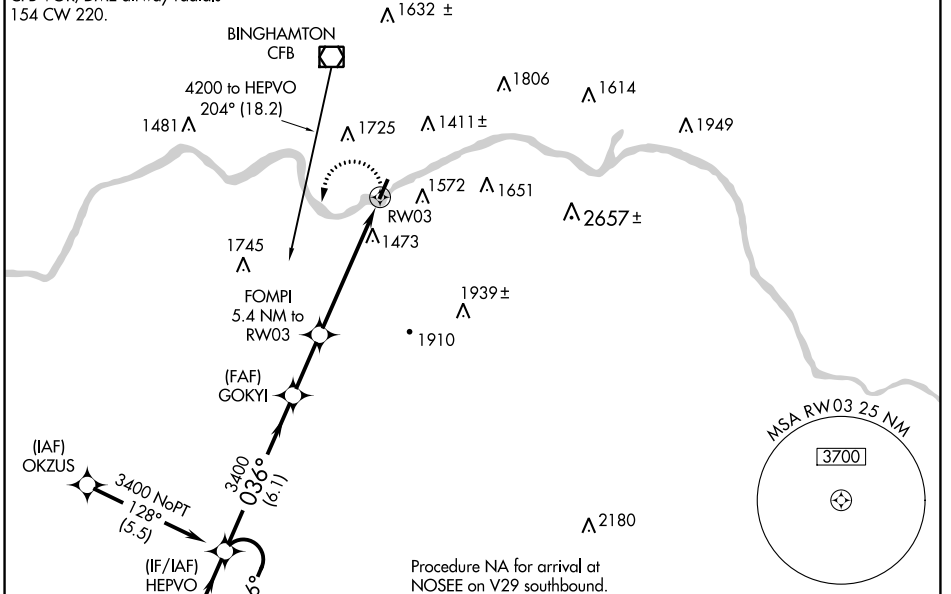
RNAV (GPS) RWY 3

TRI-CITIES (CZG)

<p>NA</p> <p>-17°C</p>	<p>DME/DME RNP-0.3 NA. Procedure NA at night.</p> <p>Rwy 3 helicopter visibility reduction below 1 SM NA.</p>	<p>MISSED APPROACH: Climbing left turn to 3400 direct HEPVO and hold.</p>
--------------------------------------	---	---

<p>AWOS-3 119.075</p>	<p>BINGHAMTON APP CON ★ 118.6 257.625</p>	<p>CLNC DEL 121.7</p>	<p>UNICOM 122.8 (CTAF) 0</p>
----------------------------------	--	----------------------------------	---

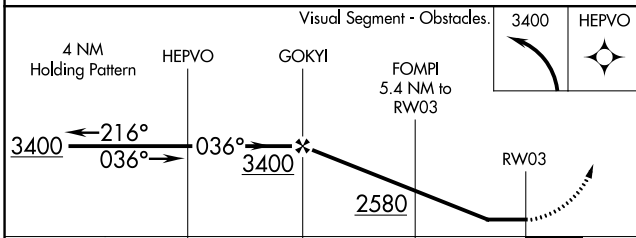
Procedure NA for arrival on CFB VOR/DME airway radials 154 CW 220.



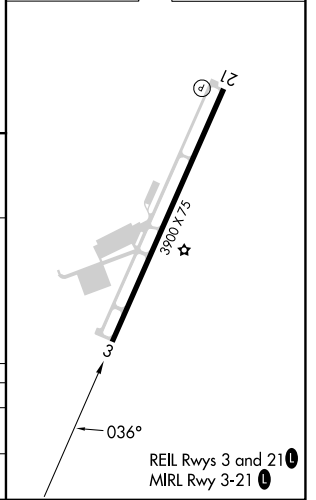
NE-2, 05 SEP 2024 to 03 OCT 2024

NE-2, 05 SEP 2024 to 03 OCT 2024

ELEV 833	TDZE 833
----------	----------



CATEGORY	A	B	C	D
LNAV MDA	2160-1¼ 1327 (1400-1¼)	2160-1½ 1327 (1400-1½)		NA
CIRCLING	2160-1¼ 1327 (1400-1¼)	2160-1½ 1327 (1400-1½)		NA



REIL Rwy 3 and 21 0
MIRL Rwy 3-21 0