

WAAS CH 86311 W28A	APP CRS 282°	Rwy Idg TDZE 911 Apt Elev 914	5499
--	------------------------	---	-------------

RNAV (GPS) RWY 28

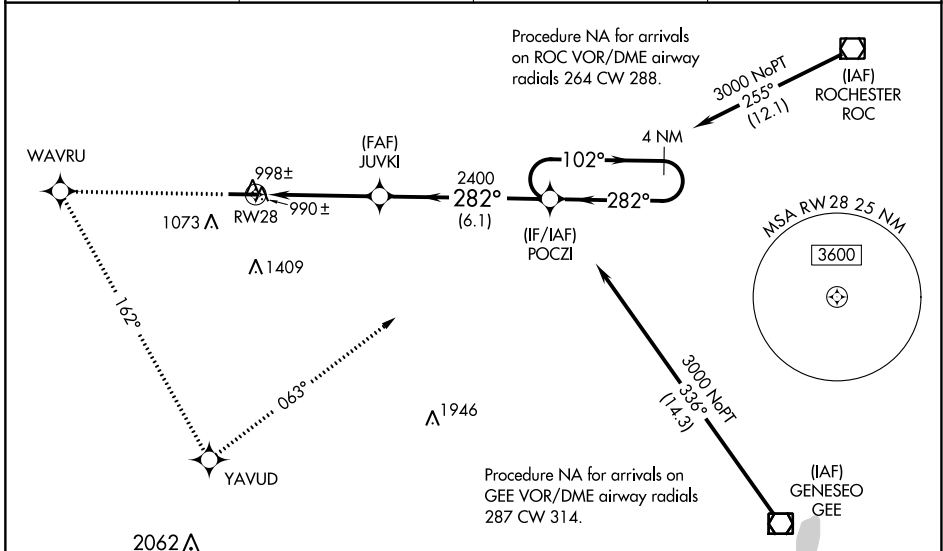
GENESEE COUNTY (GVQ)

⚠ For uncompensated Baro-VNAV systems, LNAV/VNAV NA below -16°C (4°F) or above 46°C (114°F). DME/DME RNP-0.3 NA. When local altimeter setting not received, use Rochester altimeter setting: increase LPV DA to 1263 feet and visibility ¼ SM all Cats; increase LNAV/VNAV DA to 1466 feet and visibility ½ SM all Cats; increase all MDA 120 feet and visibility LNAV Cat C ¼ SM and Circling Cats C and D ½ SM. Baro-VNAV and VDP NA when using Rochester altimeter setting. For inop MALSR increase LNAV Cat D visibility to 1¼ mile. For inop MALSR, when using Rochester altimeter setting increase LPV visibility all Cats to 1¼ mile.

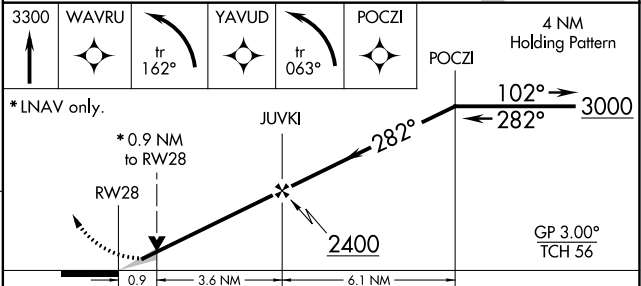
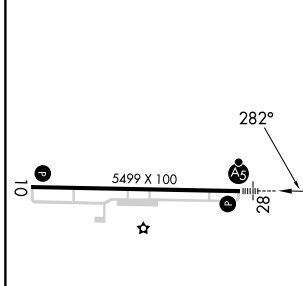


MISSED APPROACH: Climb to 3300 direct WAVRU and left turn via 162° track to YAVUD and left turn via 063° track to POCZI and hold.

AWOS-3PT 127.525	ROCHESTER APP CON 123.7 322.3	CLNC DEL 121.8	UNICOM 122.7 (CTAF) 1
----------------------------	---	--------------------------	--



ELEV 914	TDZE 911
-----------------	-----------------



CATEGORY	A	B	C	D
LPV DA		1161-½	250 (300-½)	
LNAV/VNAV DA		1364-1	453 (500-1)	
LNAV MDA		1260-½	349 (400-½)	1260-1 349 (400-1)
CIRCLING	1380-1	466 (500-1)	1720-2¼ 806 (900-2¼)	1720-2½ 806 (900-2½)