

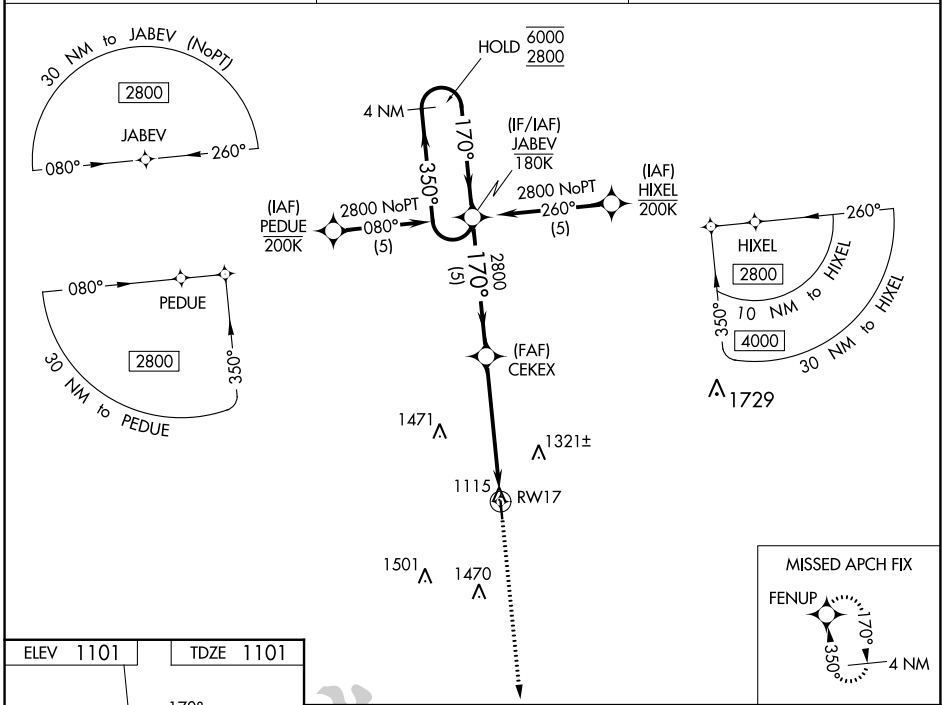
WAAS CH <b>99741</b> <b>W17A</b>	APP CRS <b>170°</b>	Rwy Idg TDZE Apt Elev	<b>3603</b> <b>1101</b> <b>1101</b>
--	------------------------	-----------------------------	---

# RNAV (GPS) RWY 17

BOWIE MUNI (ØF2)

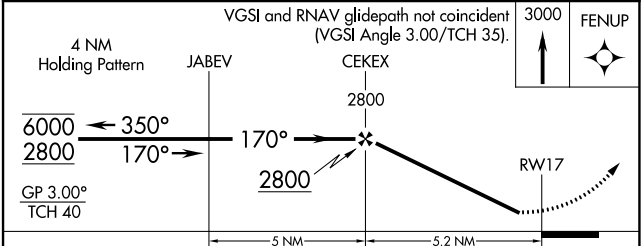
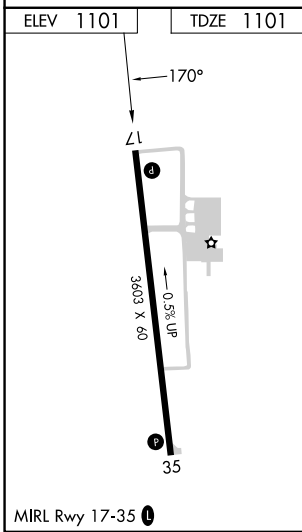
RNP APCH	MISSED APPROACH: Climb to 3000 direct FENUP and hold.
<b>▽</b> Rwy 17 helicopter visibility reduction below 1 SM NA. <b>▲</b> For uncompensated Baro-VNAV systems, LNAV/VNAV NA below -17° C or above 54° C.	

AWOS-3PT <b>118.75</b>	FORT WORTH CENTER <b>127.95 322.325</b>	UNICOM <b>122.8 (CTAF) Ø</b>
---------------------------	--	---------------------------------



SC-2, 05 SEP 2024 to 03 OCT 2024

SC-2, 05 SEP 2024 to 03 OCT 2024



CATEGORY	A	B	C	D
LPV DA	1351-1 250 (300-1)			NA
LNAV/VNAV DA	1546-1 3/8 445 (500-1 3/8)			NA
LNAV MDA	1640-1	539 (600-1)	1640-1 3/8 539 (600-1 3/8)	NA
<b>☑</b> CIRCLING	1640-1 539 (600-1)	1680-1 579 (600-1)	1860-2 1/4 759 (800-2 1/4)	NA