

(ALCRN.ALCRN1) 23166

AL-5570 (FAA)

ALCRN ONE ARRIVAL (RNAV)

JACKSONVILLE, FLORIDA

RNAV 1 - DME/DME/IRU or GPS.

RADAR required.

JACKSONVILLE APP CON

127.0 269.9

CRG ATIS

125.4

JAX D-ATIS

125.85

KNIP ATIS

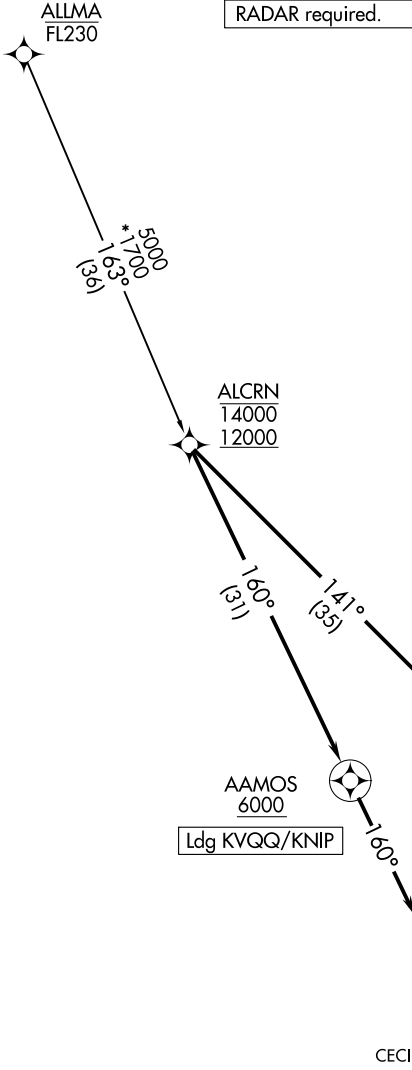
124.35 290.425

KNRB ATIS *

236.775

VQQ ATIS

125.275



NOTE: Jet and turboprop aircraft only.

NOTE: Landing KJAX: Turboprop aircraft only.

SNKEM
4000

Ldg KJAX/KCRG/KNRB

AAMOS
6000

Ldg KVQQ/KNIP

JACKSONVILLE
INTL

MAYPORT NS
(ADM DAVID L MCDONALD FLD)

JACKSONVILLE EXEC
AT CRAIG

JACKSONVILLE NAS
(TOWERS FLD)

CECIL

NOTE: Chart not to scale.

ARRIVAL ROUTE DESCRIPTION

ALLMA TRANSITION (ALLMA.ALCRN1)

LANDING KJAX/KNRB/KCRG: From ALCRN on track 141° to cross SNKEM at or above 4000, then on track 141°. Expect RADAR vectors to final approach course.

LANDING KVQQ/KNIP: From ALCRN on track 160° to cross AAMOS at or above 6000, then on track 160°. Expect RADAR vectors to final approach course.

ALCRN ONE ARRIVAL (RNAV)

(ALCRN.ALCRN1) 15JUN23

JACKSONVILLE, FLORIDA

SE-3, 05 SEP 2024 to 03 OCT 2024

SE-3, 05 SEP 2024 to 03 OCT 2024