

WAAS CH <b>45540</b> <b>W34A</b>	APP CRS <b>334°</b>	Rwy Idg TDZE Apt Elev	<b>4477</b> <b>20</b> <b>20</b>
--	------------------------	-----------------------------	---------------------------------------

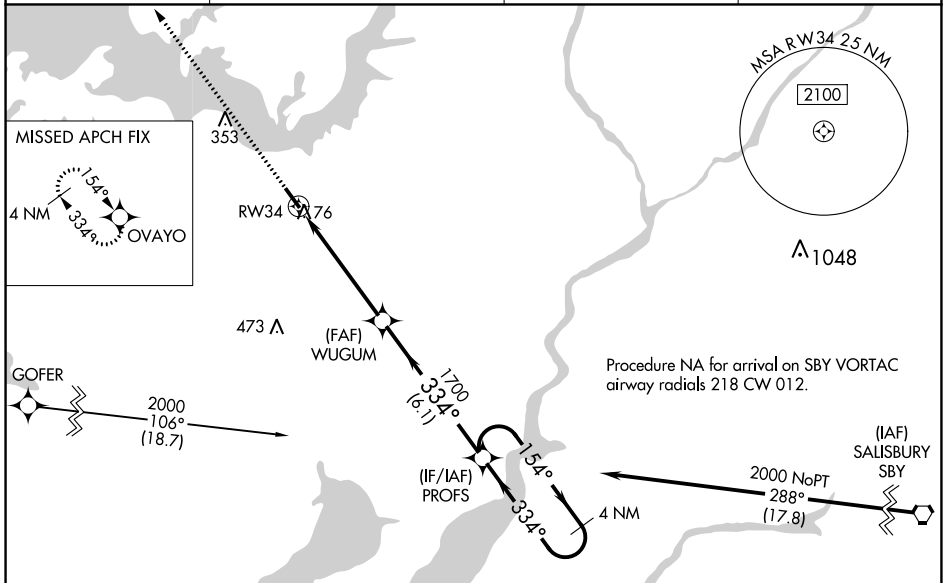
## RNAV (GPS) RWY 34

CAMBRIDGE-DORCHESTER RGNL (CGE)

⚠ Circling NA at night. For uncompensated Baro-VNAV systems, LNAV/VNAV NA below -15°C (5°F) or above 54°C (130°F). Rwy 34 helicopter visibility reduction below 3/4 SM NA. DME/DME RNP-0.3 NA.

MISSED APPROACH: Climb to 2000 direct OVAYO and hold.

AWOS-3 <b>120.675</b>	PATXENT APP CON * <b>121.0 250.3</b>	UNICOM <b>122.7 (CTAF)</b>	<b>121.9</b> Ⓣ
--------------------------	---	-------------------------------	----------------



ELEV	20	TDZE	20
------	----	------	----

2000 OVAYO VGSi and RNAV glidepath not coincident (VGSi Angle 3.25/TCH 35).

\* LNAV only.

PROFS 4 NM Holding Pattern

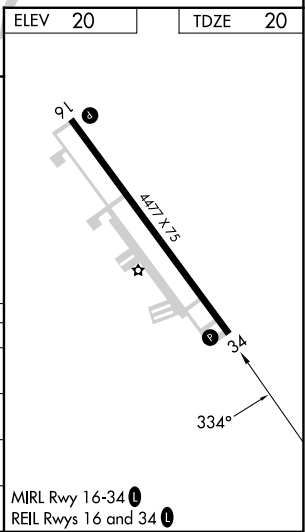
WUGUM 1700

154° → 2000

← 334°

GP 3.00° TCH 57

1.2 NM 3.9 NM 6.1 NM



CATEGORY	A	B	C	D
LPV DA		286-7/8	266 (300-7/8)	
LNAV/VNAV DA		309-7/8	289 (300-7/8)	
LNAV MDA	480-1 460 (500-1)		480-1 3/8 460 (500-1 3/8)	
CIRCLING	480-1 460 (500-1)		660-1 3/4 640 (700-1 3/4)	780-2 1/2 760 (800-2 1/2)

NE-3, 05 SEP 2024 to 03 OCT 2024

NE-3, 05 SEP 2024 to 03 OCT 2024