

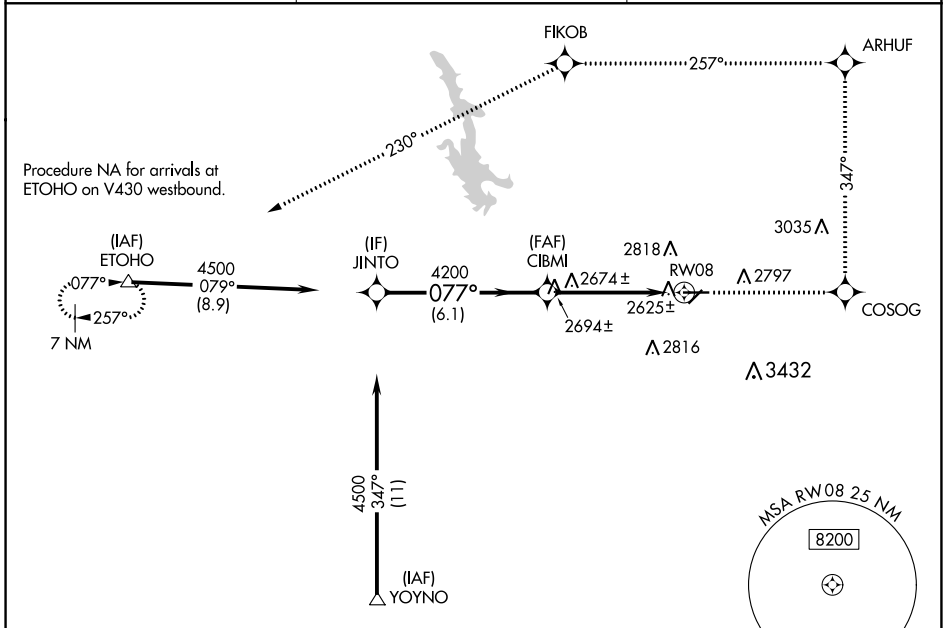
WAAS CH <b>99316</b> <b>W08A</b>	APP CRS <b>077°</b>	Rwy Idg TDZE Apt Elev	<b>5205</b> <b>2585</b> <b>2591</b>
--	------------------------	-----------------------------	---

# RNAV (GPS) RWY 8

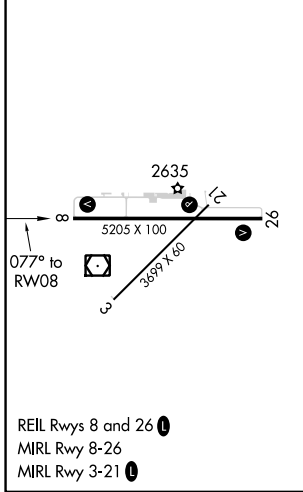
HAVRE CITY-COUNTY (HVR)

RNP APCH-GPS.	MISSED APPROACH: Climb to 8000 direct COSOG and left on track 347° to ARHUF and left turn on track 257° to FIKOB and on track 230° to ETOHO and hold.
---------------	---

ASOS <b>135.225</b>	SALT LAKE CENTER <b>133.4 285.4</b>	UNICOM <b>122.8 (CTAF)</b>
------------------------	--	-------------------------------



ELEV 2591	<b>D</b>	TDZE 2585
-----------	----------	-----------



Procedure Turn NA	8000	COSOG	ARHUF	FIKOB	ETOHO
JINTO	↑	△	tr 347°	tr 257°	tr 230°
4500		CIBMI			
GP 3.00°			*1.3 NM to RW08		
TCH 40			RW08		
	6.1 NM	3.6 NM	1.3 NM		
CATEGORY	A	B	C	D	
LPV DA	2835-1 250 (300-1)				
LNAV/VNAV DA	2906-1¼ 321 (400-1¼)				
LNAV MDA	3020-1	435 (500-1)	3020-1¼ 435 (500-1¼)	3020-1½ 435 (500-1½)	
CIRCLING	3080-1 489 (500-1)	3120-1 529 (600-1)	3360-2¼ 769 (800-2¼)	3740-3 1149 (1200-3)	

NW-1, 05 SEP 2024 to 03 OCT 2024

NW-1, 05 SEP 2024 to 03 OCT 2024