

HAVRE, MONTANA

AL-5575 (FAA)

21280

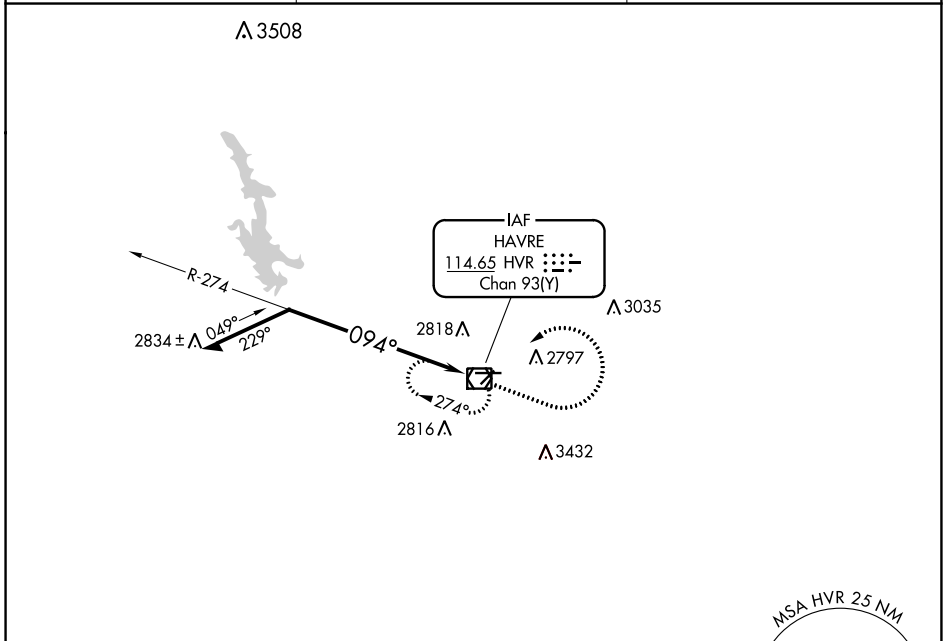
VOR/DME HVR 114.65 Chan 93(Y)	APP CRS 094°	Rwy Idg TDZE Apt Elev	5205 2585 2591
--	------------------------	-----------------------------	---

VOR RWY 8

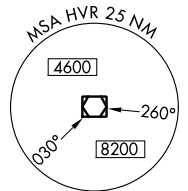
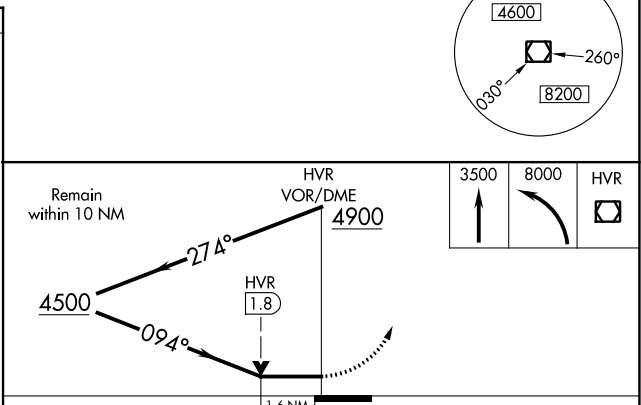
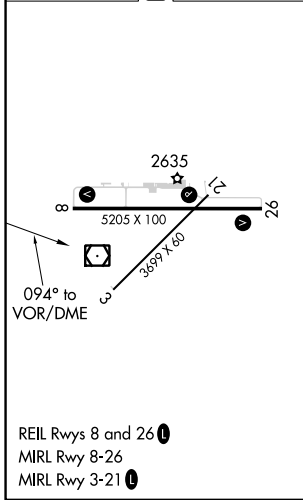
HAVRE CITY-COUNTY (HVR)

MISSED APPROACH: Climb to 3500 then climbing left turn to 8000 direct HVR VOR/DME and hold, continue climb-in-hold to 8000.

ASOS 135.225	SALT LAKE CENTER 133.4 285.4	UNICOM 122.8 (CTAF)
------------------------	--	-------------------------------



ELEV 2591	D	TDZE 2585
-----------	----------	-----------



CATEGORY	A	B	C	D
S-8	3140-1 555 (600-1)		3140-1½ 555 (600-1½)	
CIRCLING	3140-1 549 (600-1)		3360-2¼ 769 (800-2¼)	3740-3 1149 (1200-3)

HAVRE, MONTANA
Amdt 7B 07OCT21

48°33'N-109°46'W

VOR RWY 8

NW-1, 05 SEP 2024 to 03 OCT 2024

NW-1, 05 SEP 2024 to 03 OCT 2024