

BEND, OREGON

AL-5579 (FAA)

23334

VORTAC DSD <b>117.6</b> Chan <b>123</b>	APP CRS <b>136°</b>	Rwy Idg TDZE <b>3432</b> Apt Elev <b>3459</b>
---	------------------------	---

# VOR RWY 16

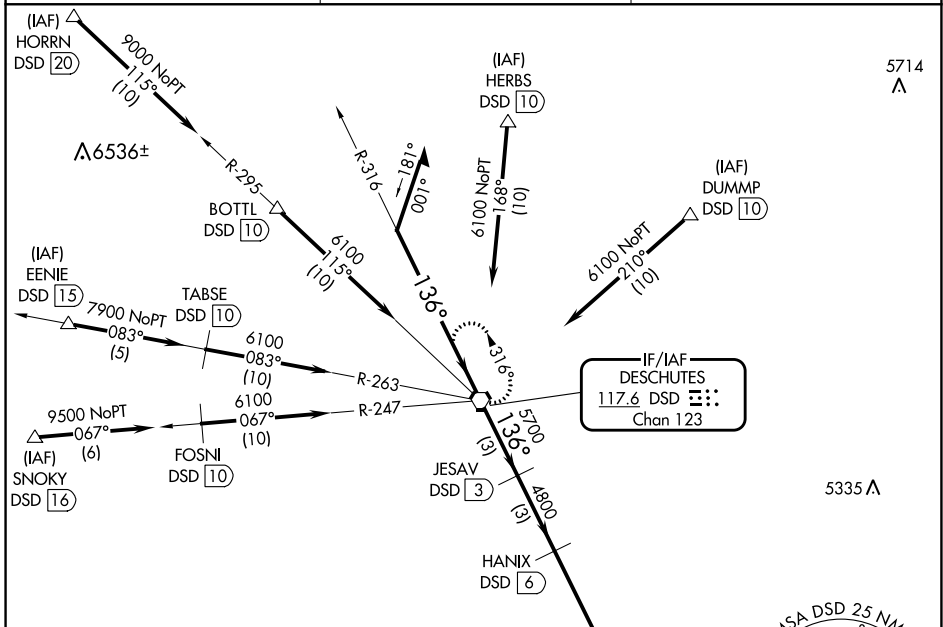
BEND MUNI (BDN)

DME required.

**▼** Rwy 16 helicopter visibility reduction below 3/4 SM N/A. When local altimeter setting not received, use Redmond altimeter setting and increase all MDAs 100 feet and increase S-16 visibility Cats C and D 1/4 SM, and Circling visibility Cat C 1/2 SM.

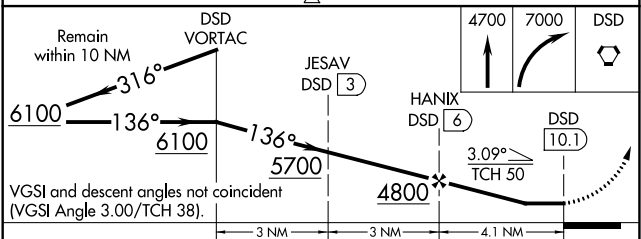
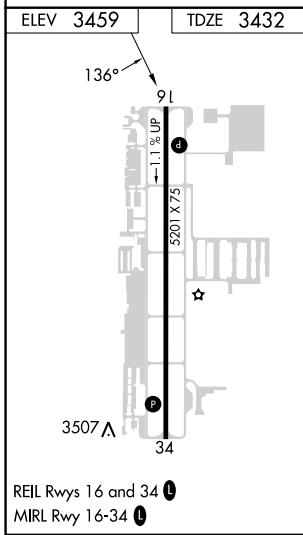
MISSED APPROACH: Climb to 4700 then climbing right turn to 7000 direct DSD VORTAC and hold, continue climb-in-hold to 7000.

AWOS-3 <b>134.425</b>	SEATTLE CENTER <b>126.15 269.475</b>	UNICOM <b>123.0 (CTAF)</b>
--------------------------	---	-------------------------------



NW-1, 05 SEP 2024 to 03 OCT 2024

NW-1, 05 SEP 2024 to 03 OCT 2024



CATEGORY	A	B	C	D
S-16	3880-1	448 (500-1)	3880-1 3/8	448 (500-1 3/8)
<b>C</b> CIRCLING	3960-1 501 (600-1)	3980-1 521 (600-1)	4120-1 3/4 661 (700-1 3/4)	4640-3 1181 (1200-3)

BEND, OREGON  
Amdt 11 10AUG23

44°06'N-121°12'W

# BEND MUNI (BDN) VOR RWY 16