

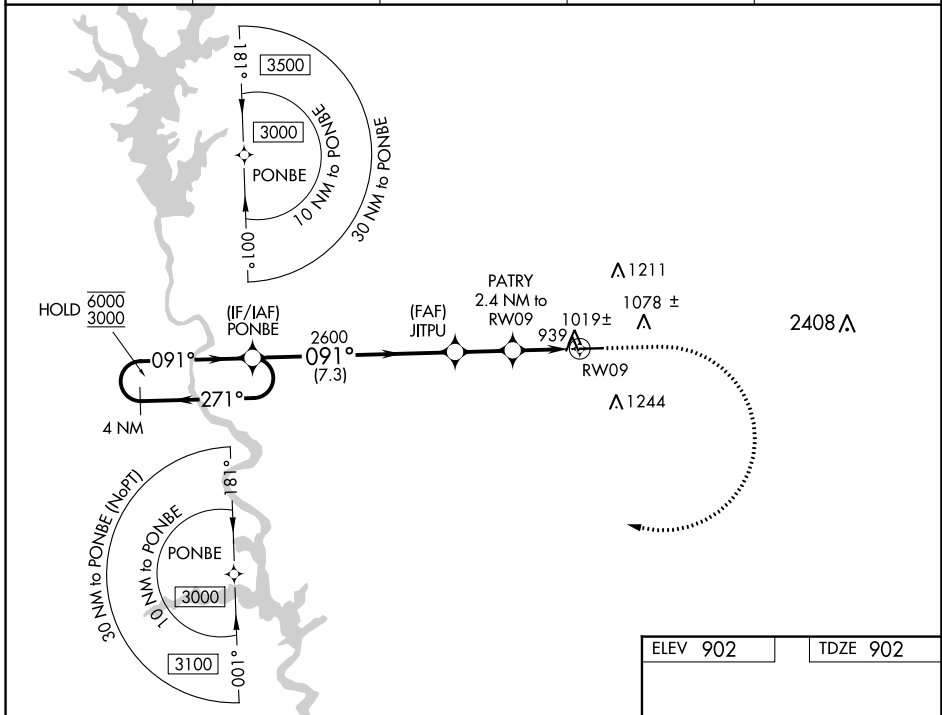
WAAS CH 58019 W09A	APP CRS 091°	Rwy Idg 5002 TDZE 902 Apt Elev 902
--	------------------------	---

RNAV (GPS) RWY 9

HARRIS COUNTY (PIM)

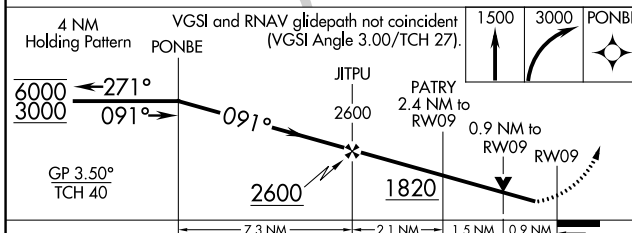
RNP APCH - GPS.		<p>▽ Circling Rwy 27 NA at night. Rwy 9 helicopter visibility reduction below 3/4 SM NA. ▲ For uncompensated Baro-VNAV systems, LNAV/VNAV NA below -16°C or above 48°C.</p>		<p>MISSED APPROACH: Climb to 1500 then climbing right turn to 3000 direct PONBE and hold.</p>	
-----------------	--	--	--	---	--

AWOS-3PT 120.275	ATLANTA APP CON* 125.5 323.1	CLNC DEL 127.7	GCO 121.725	UNICOM 122.8 (CTAF) 0
----------------------------	--	--------------------------	-----------------------	---------------------------------



SE-4, 05 SEP 2024 to 03 OCT 2024

SE-4, 05 SEP 2024 to 03 OCT 2024



ELEV 902	TDZE 902
<p>MIRL Rwy 9-27 0</p>	

CATEGORY	A	B	C	D
LPV DA		1213-7/8	311 (400-7/8)	
LNAV/VNAV DA		1245-1	343 (400-1)	
LNAV MDA		1280-1	378 (400-1)	
C CIRCLING	1320-1 418 (500-1)	1440-1 538 (600-1)	1700-2 1/4 798 (800-2 1/4)	1820-3 918 (1000-3)