

LOC/DME	I-OTI	APP CRS	Rwy Idg	2999
108.5		219°	TDZE	172
Chan 22			Apt Elev	172

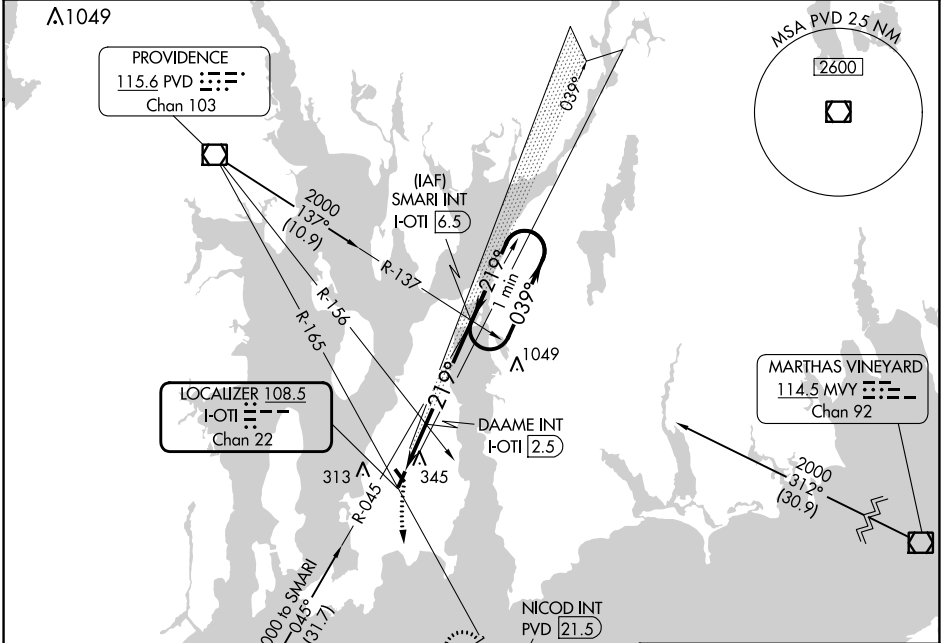
LOC RWY 22

NEWPORT STATE (UUU)

NA When local altimeter setting not received, use Providence altimeter setting and increase all MDA 60 feet. Straight-in Rwy 22 NA at night, Circling Rwy 4, 22, 34 NA at night.

MISSED APPROACH: Climbing left turn to 2100 via PVD VOR/DME R-165 to NICOD INT/21.5 DME and hold.

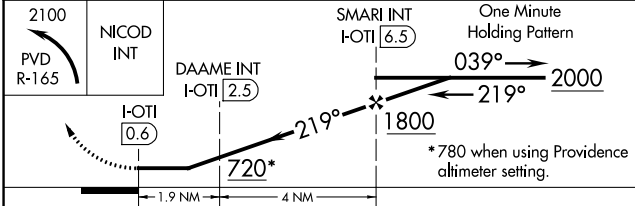
ASOS	PROVIDENCE APP CON*	CLNC DEL	UNICOM
132.075	128.7 269.525	127.25	123.05 (CTAF) 0



NE-1, 05 SEP 2024 to 03 OCT 2024

NE-1, 05 SEP 2024 to 03 OCT 2024

2100 PVD R-165	NICOD INT	SMARI INT I-OTI 6.5	One Minute Holding Pattern
	DAAME INT I-OTI 2.5		
	I-OTI 0.6		



CATEGORY	A	B	C	D
S-22	720-1	548 (600-1)	720-1 ⁵ / ₈ 548 (600-1 ⁵ / ₈)	NA
CIRCLING	760-1	588 (600-1)	780-1 ³ / ₄ 608 (700-1 ³ / ₄)	NA
DAAME FIX MINIMUMS (DUAL VOR RECEIVERS OR DME REQUIRED)				
S-22	640-1	468 (500-1)	640-1 ¹ / ₄ 468 (500-1 ¹ / ₄)	NA
CIRCLING	760-1	588 (600-1)	780-1 ³ / ₄ 608 (700-1 ³ / ₄)	NA

ELEV 172	TDZE 172
----------	----------

REIL Rwy 22 **0**
MIRL Rws 4-22 and 16-34 **0**

FAF to MAP 5.9 NM

Knots	60	90	120	150	180
Min:Sec	5:54	3:56	2:57	2:22	1:58