

APP CRS 166°	Rwy Idg 2623
	TDZE 162
	Apt Elev 172

RNAV (GPS) RWY 16

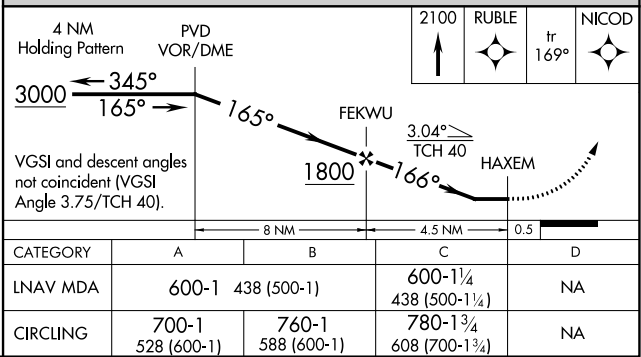
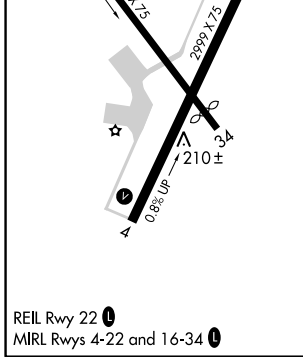
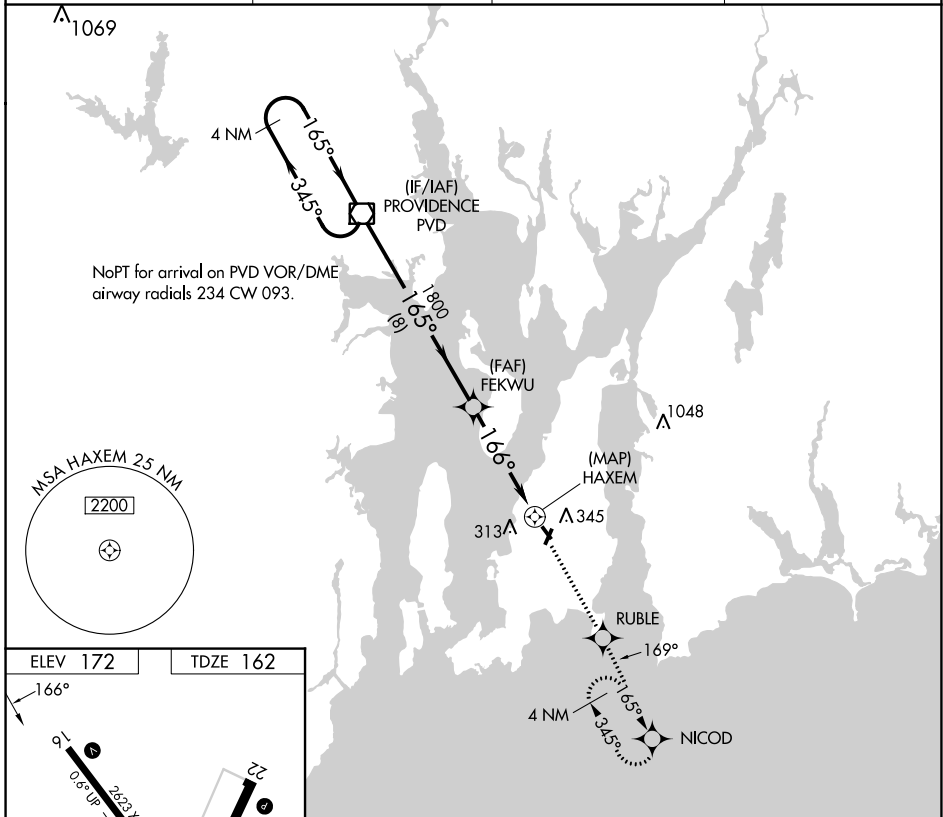
NEWPORT STATE (UUU)

RNP APCH

When local altimeter setting not received, use Providence altimeter setting and increase all MDAs 60 feet. Circling Rwy 4, 22, 34 NA at night.
Rwy 16 helicopter visibility reduction below $\frac{3}{4}$ SM NA.

MISSED APPROACH: Climb to 2100 direct RUBLE and via 169° track to NICOD and hold.

ASOS 132.075	PROVIDENCE APP CON * 128.7 269.525	CLNC DEL 127.25	UNICOM 123.05 (CTAF)
------------------------	--	---------------------------	--------------------------------



NE-1, 05 SEP 2024 to 03 OCT 2024

NE-1, 05 SEP 2024 to 03 OCT 2024