

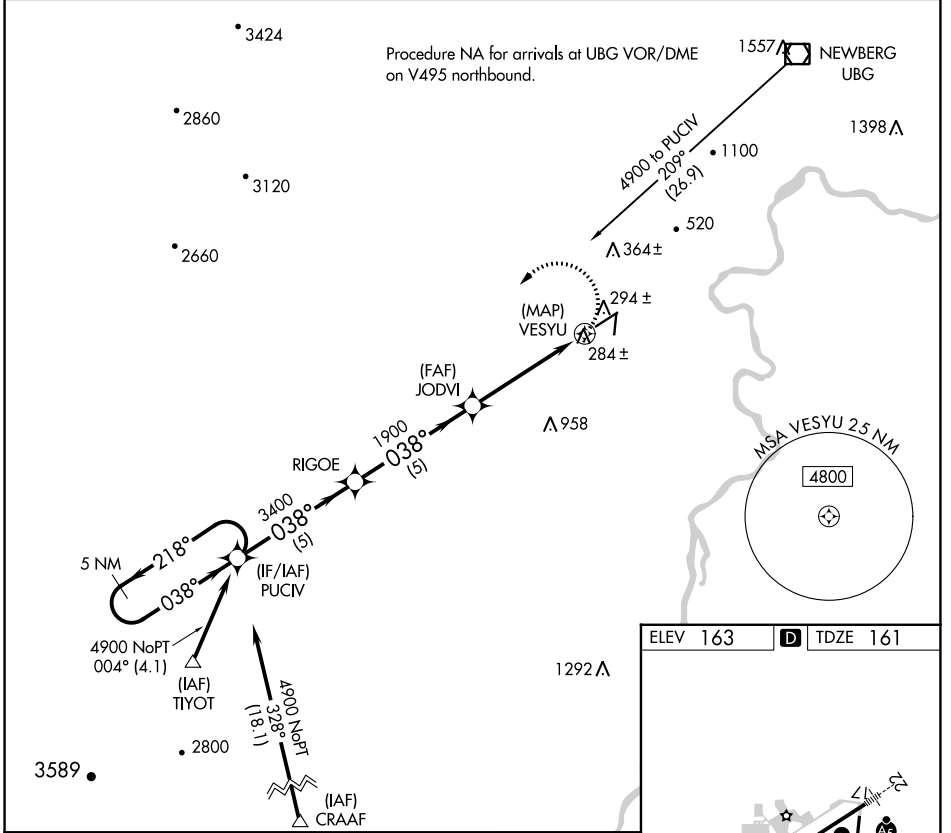
APP CRS	Rwy Idg	5320
038°	TDZE	161
	Apt Elev	163

RNAV (GPS) RWY 4

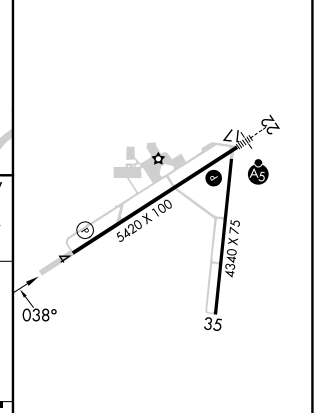
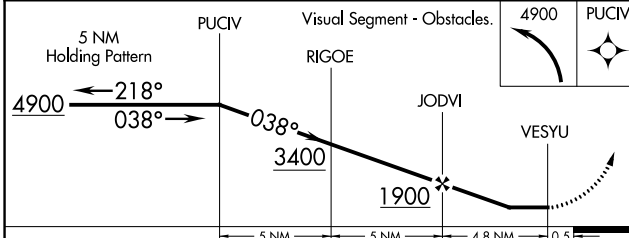
MC MINNVILLE MUNI (MMV)

RNP APCH.		MISSED APPROACH: Climbing left turn to 4900 direct PUCIV and hold, continue climb-in-hold to 4900.		
<p>▼ When local altimeter setting not received, use Aurora State altimeter setting and increase all MDA 60 feet and visibility Cts C/D to 1¾. Rwy 4 helicopter visibility reduction below ¾ SM NA.</p>				

ASOS 135.675	PORTLAND APP CON 126.0 284.6 (NORTH)	SEATTLE CENTER 125.8 291.7 (SOUTH)	CLNC DEL 118.35	UNICOM 123.0 (CTAF) 0
------------------------	--	--	---------------------------	---------------------------------



ELEV 163	D TDZE 161
----------	-------------------



CATEGORY	A	B	C	D
LNAV MDA	600-1	439 (500-1)	600-1¼	439 (500-1¼)

REIL Rwy 4 0
HIRL Rwy 4-22 0

NW-1, 05 SEP 2024 to 03 OCT 2024

NW-1, 05 SEP 2024 to 03 OCT 2024