

WAAS CH 70716 W24A	APP CRS 240°	Rwy Idg TDZE Apt Elev	3898 884 887
--	------------------------	-----------------------------	---

RNAV (GPS) RWY 24

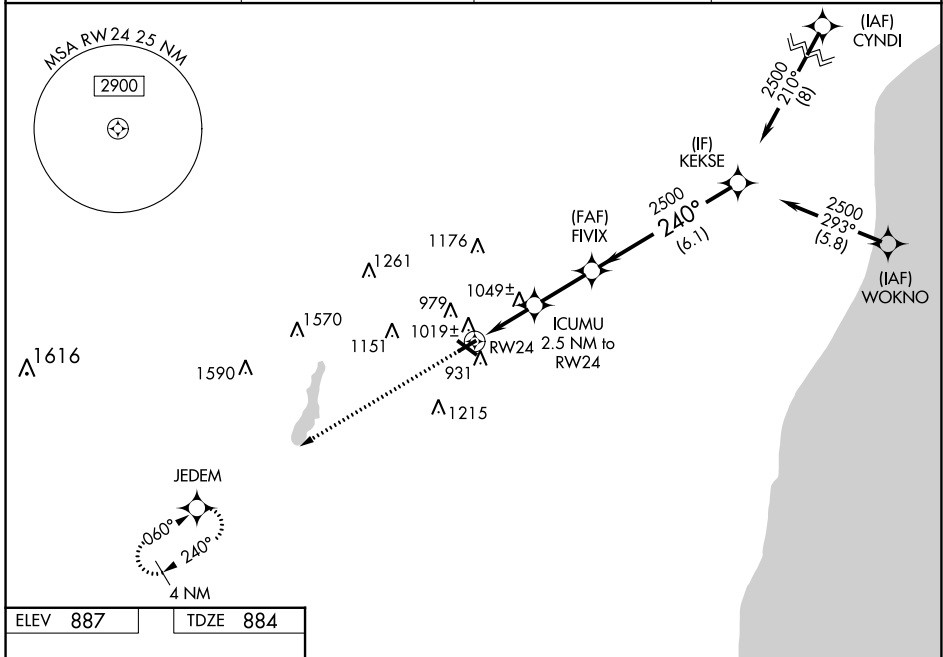
WEST BEND MUNI (E/TB)

RNP APCH - GPS.

▼ For uncompensated Baro-VNAV systems, LNAV/VNAV NA below -16°C or above 47°C. Rwy 24 helicopter visibility reduction below 3/4 SM NA. Baro-VNAV and VDP NA when using Lawrence J Timmerman altimeter setting. When local altimeter setting not received, use Milwaukee/Lawrence J Timmerman altimeter setting and increase LPV DA to 1260 feet; LNAV/VNAV DA to 1433 feet and all visibility 3/4 SM; increase all MDA 80 feet and LNAV Cat C/D and Circling Cat C/D visibility 1/4 SM.

⚠ MISSED APPROACH: Climb to 3000 direct JEDEM and hold.

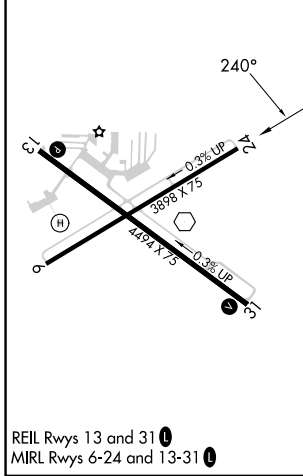
AWOS-3 120.0	MILWAUKEE APP CON 125.35 307.0	CLNC DEL 124.75	UNICOM 123.05 (CTAF) 0
------------------------	--	---------------------------	----------------------------------



EC-3, 05 SEP 2024 to 03 OCT 2024

EC-3, 05 SEP 2024 to 03 OCT 2024

ELEV 887	TDZE 884
-----------------	-----------------



3000	JEDEM	ICUMU 2.5 NM to RW24	FVIX	KEKSE	Procedure Turn NA
↑	✧	* 1.2 NM to RW24	✧	✧	2500
* LNAV only		RW24	✧	✧	GP 3.00° TCH 45
		1.2 NM	1.3 NM	2.4 NM	6.1 NM
CATEGORY	A	B	C	D	
LPV DA	1196-1		312 (400-1)		
LNAV/VNAV DA	1369-1 3/4		485 (500-1 3/4)		
LNAV MDA	1300-1	416 (500-1)	1300-1 1/4	416 (500-1 1/4)	
CIRCLING	1420-1 533 (600-1)	1520-1 633 (700-1)	1560-2 673 (700-2)	1560-2 1/4 673 (700-2 1/4)	