

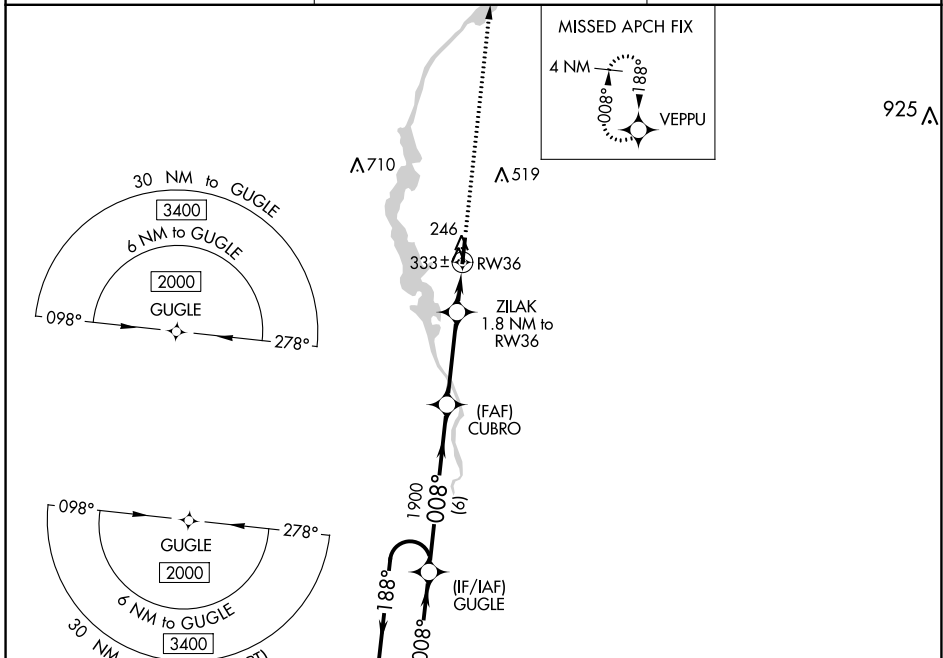
WAAS CH 70414 W36A	APP CRS 008°	Rwy Idg TDZE 226 Apt Elev 226	4999
----------------------------------------	------------------------	---------------------------------------------------	-------------

RNAV (GPS) RWY 36

MONROE COUNTY (M40)

RNP APCH.
 For uncompensated Baro-VNAV systems, LNAV/VNAV NA below -15°C or above 54°C. Rwy 36 helicopter visibility reduction below ¾ SM NA.
 MISSED APPROACH: Climb to 2000 direct VEPPU and hold.

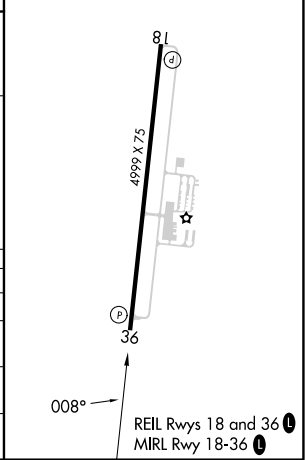
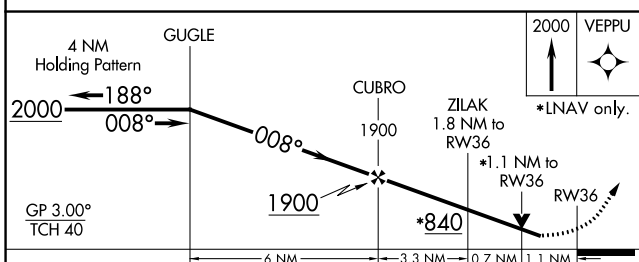
AWOS-3P 118.475	COLUMBUS APP CON ★ 126.075 239.25	UNICOM 122.8 (CTAF) 0
---------------------------	---------------------------------------------	---------------------------------



SC-4, 05 SEP 2024 to 03 OCT 2024

SC-4, 05 SEP 2024 to 03 OCT 2024

ELEV 226	TDZE 226
----------	----------



CATEGORY	A	B	C	D
LPV DA		506-7/8	280 (300-7/8)	
LNAV/VNAV DA		624-11/8	398 (400-11/8)	
LNAV MDA		600-1	374 (400-1)	
CIRCLING	660-1 434 (500-1)	680-1 454 (500-1)	820-11/2 594 (600-11/2)	860-2 634 (700-2)