

WAAS CH 40336 W04A	APP CRS 043°	Rwy Idg TDZE 92 Apt Elev 92	4504
----------------------------------------	------------------------	-------------------------------------------------	-------------

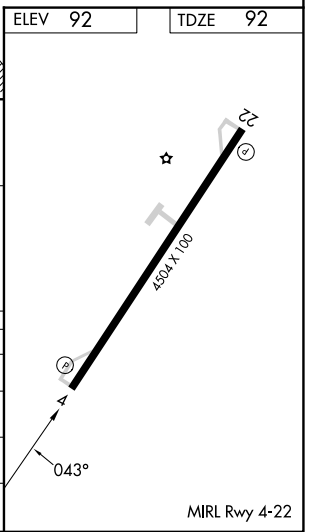
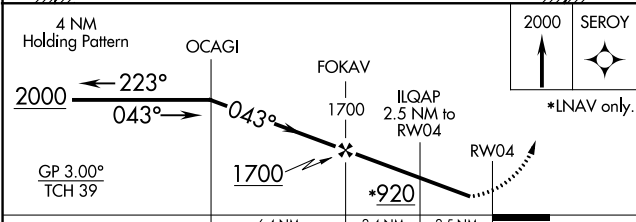
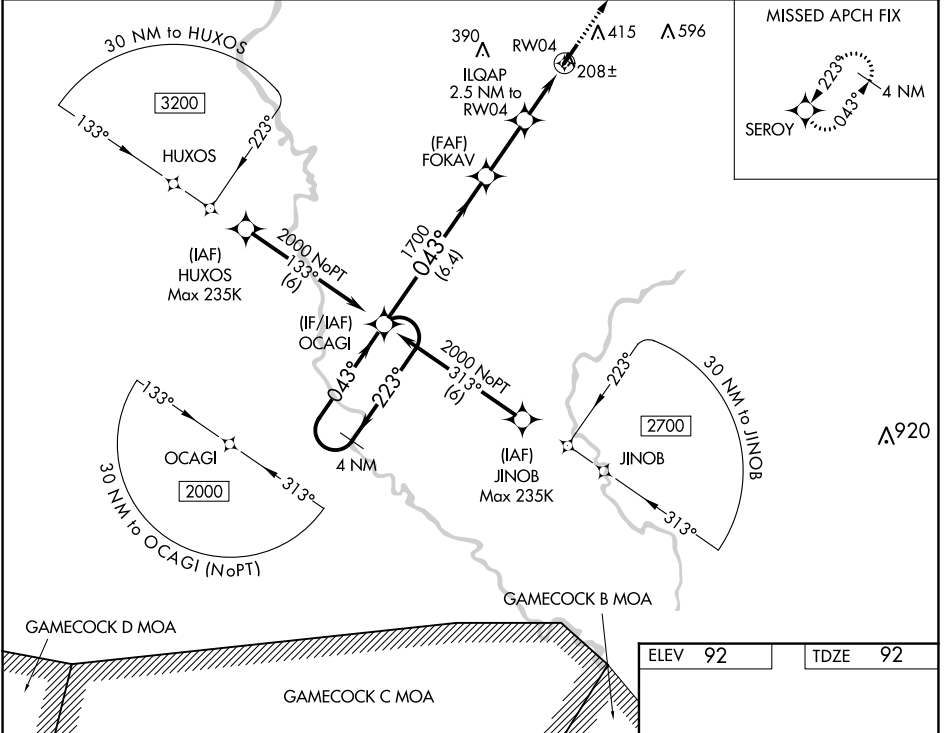
RNAV (GPS) RWY 4

MARION COUNTY (MAO)

Baro-VNAV NA when using Florence altimeter setting. For uncompensated Baro-VNAV systems, LNAV/VNAV NA below -8°C (18°F) or above 54°C (130°F). DME/DME RNP-0.3 NA. Helicopter visibility reduction below 3/4 SM NA. When local altimeter setting not received, use Florence altimeter setting and increase all DA 53 feet and all visibilities 1/8 mile, increase all MDA 60 feet and all Cat C/D visibilities 1/4 mile.

MISSED APPROACH: Climb to 2000 direct SEROY and hold.

AWOS-3PT 119.875	FLORENCE APP CON ★ 135.25 316.15	UNICOM 122.8 (CTAF)
----------------------------	--------------------------------------------	-------------------------------



CATEGORY	A	B	C	D
LPV DA	342-7/8	250 (300-7/8)	342-1	250 (300-1)
LNAV/VNAV DA	369-7/8	277 (300-7/8)	369-1	277 (300-1)
LNAV MDA	460-1		368 (400-1)	
CIRCLING	720-1	628 (700-1)	720-1 3/4 628 (700-1 3/4)	960-2 3/4 868 (900-2 3/4)

SE-2, 05 SEP 2024 to 03 OCT 2024

SE-2, 05 SEP 2024 to 03 OCT 2024