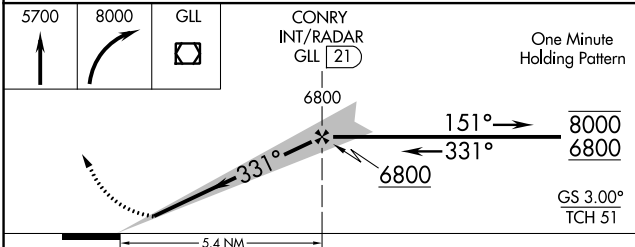
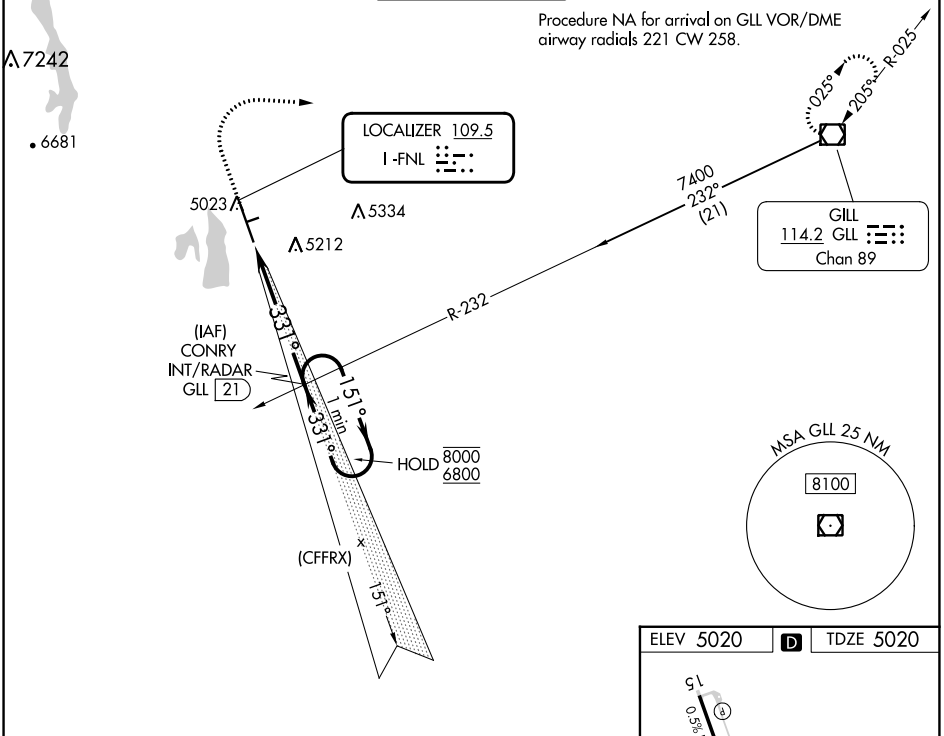


LOC I-FNL <b>109.5</b>	APP CRS <b>331°</b>	Rwy Idg <b>8500</b>	TDZE <b>5020</b>
		Apt Elev <b>5020</b>	

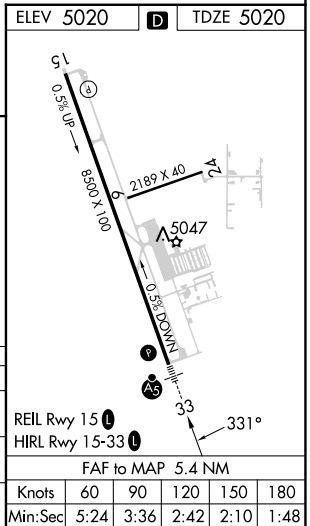
# ILS or LOC RWY 33

NORTHERN COLORADO RGNL (F'NL)

<p>Circling Rwy 24 NA at night.</p>		<p>MALS</p>	<p>MISSED APPROACH: Climb to 5700 then climbing right turn to 8000 direct GLL VOR/DME and hold.</p>	
<p>ATIS <b>135.075</b></p>	<p>DENVER APP CON <b>134.85 251.125</b></p>	<p>NOCO TOWER★ <b>118.4 (CTAF) 0</b></p>	<p>GND CON <b>121.65</b></p>	<p>CLNC DEL <b>120.25</b> (When twr closed)</p>



CATEGORY	A	B	C	D
S-ILS 33	5220-1/2 200 (200-1/2)			
S-LOC 33	5500-1/2 480 (500-1/2)	5500-1 480 (500-1)		
CIRCLING	5500-1 480 (500-1)	5520-1 500 (500-1)	5520-1 1/2 500 (500-1 1/2)	5700-2 1/4 680 (700-2 1/4)



SW-1, 05 SEP 2024 to 03 OCT 2024

SW-1, 05 SEP 2024 to 03 OCT 2024