

APP CRS 151°	Rwy Idg 8500
	TDZE 4990
	Apt Elev 5020

RNAV (GPS) RWY 15

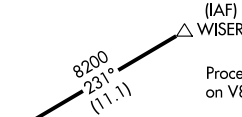
NORTHERN COLORADO RGNL (FNL)

RNP APCH-GPS.

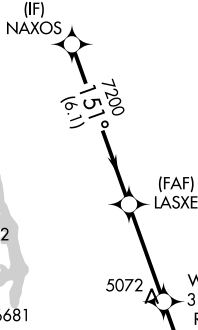
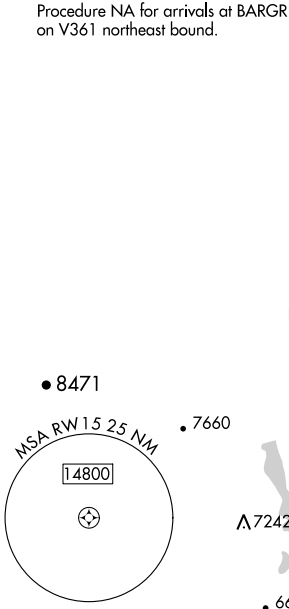
MISSED APPROACH: Climb to 7600 direct IMOMY and hold.

ATIS 135.075	DENVER APP CON 134.85 251.125	NOCO TOWER* 118.4 (CTAF) 0	GND CON 121.65	CLNC DEL 120.25 (When twr closed)
------------------------	---	--------------------------------------	--------------------------	--

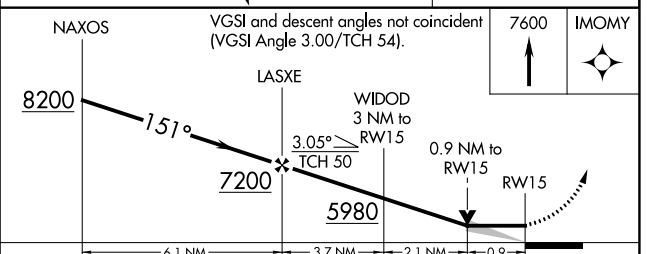
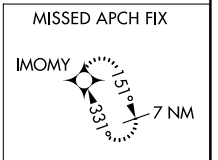
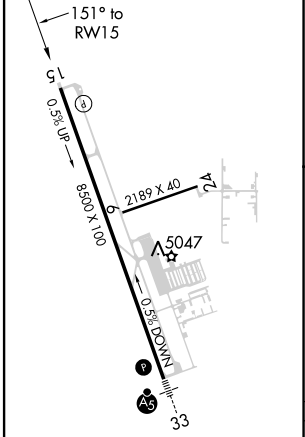
Procedure NA for arrivals at BARGR on V361 northeast bound.



Procedure NA for arrivals at WISER on V81 north bound.



ELEV 5020	D	TDZE 4990
-----------	----------	-----------



CATEGORY	A	B	C	D
LNAV MDA	5320-1 330 (400-1)			

SW-1, 05 SEP 2024 to 03 OCT 2024

SW-1, 05 SEP 2024 to 03 OCT 2024