

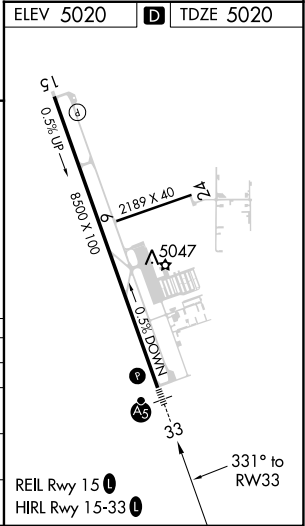
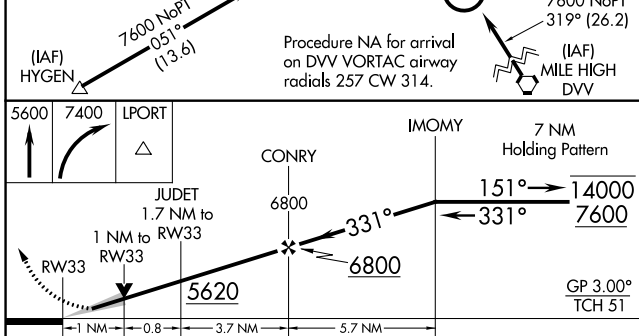
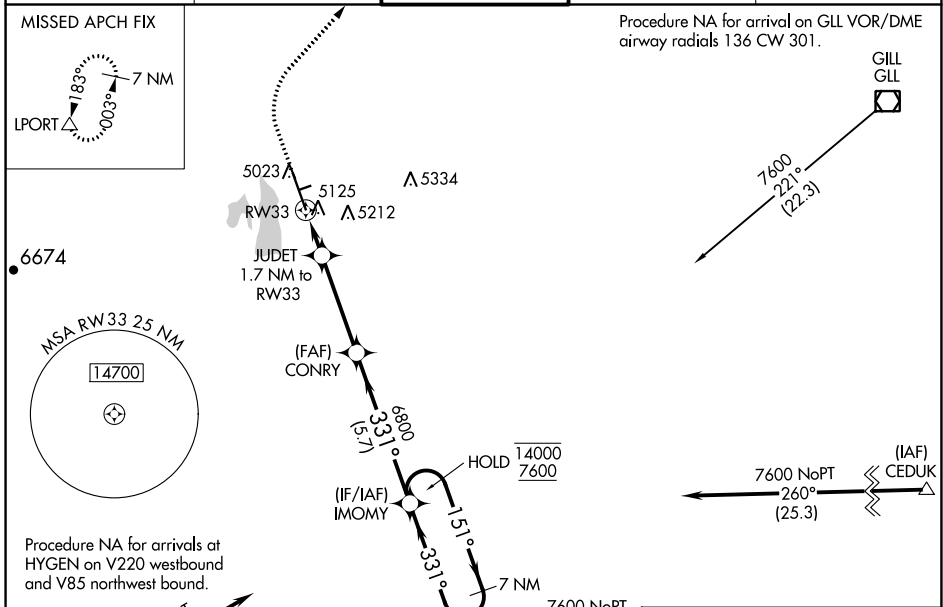
WAAS CH <b>97511</b> <b>W33A</b>	APP CRS <b>331°</b>	Rwy Idg TDZE Apt Elev	<b>8500</b> <b>5020</b> <b>5020</b>
--	------------------------	-----------------------------	---

# RNAV (GPS) RWY 33

NORTHERN COLORADO RGNL (FNL)

RNP APCH-GPS.	MALSR 	MISSED APPROACH: Climb to 5600, then climbing right turn to 7400 direct LPORT and hold.
---------------	-----------	---

ATIS <b>135.075</b>	DENVER APP CON <b>134.85 251.125</b>	NOCO TOWER* <b>118.4</b> (CTAF)	GND CON <b>121.65</b>	CLNC DEL <b>120.25</b> (When twr closed)
------------------------	---	------------------------------------	--------------------------	--



CATEGORY	A	B	C	D
LPV DA		5220-1/2	200 (200-1/2)	
RNAV/VNAV DA		5329-1/2	309 (400-1/2)	
RNAV MDA	5380-1/2	360 (400-1/2)	5380-5/8	360 (400-5/8)
CIRCLING	5480-1 460 (500-1)	5520-1 500 (500-1)	5520-1 1/2 500 (500-1/2)	5700-2 1/4 680 (700-2 1/4)

SW-1, 05 SEP 2024 to 03 OCT 2024

SW-1, 05 SEP 2024 to 03 OCT 2024