

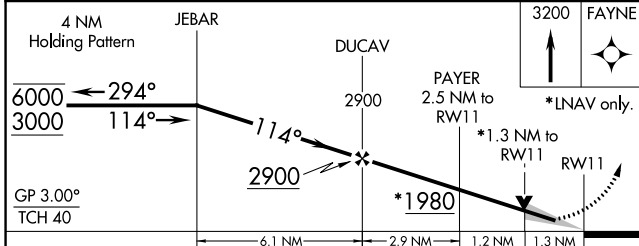
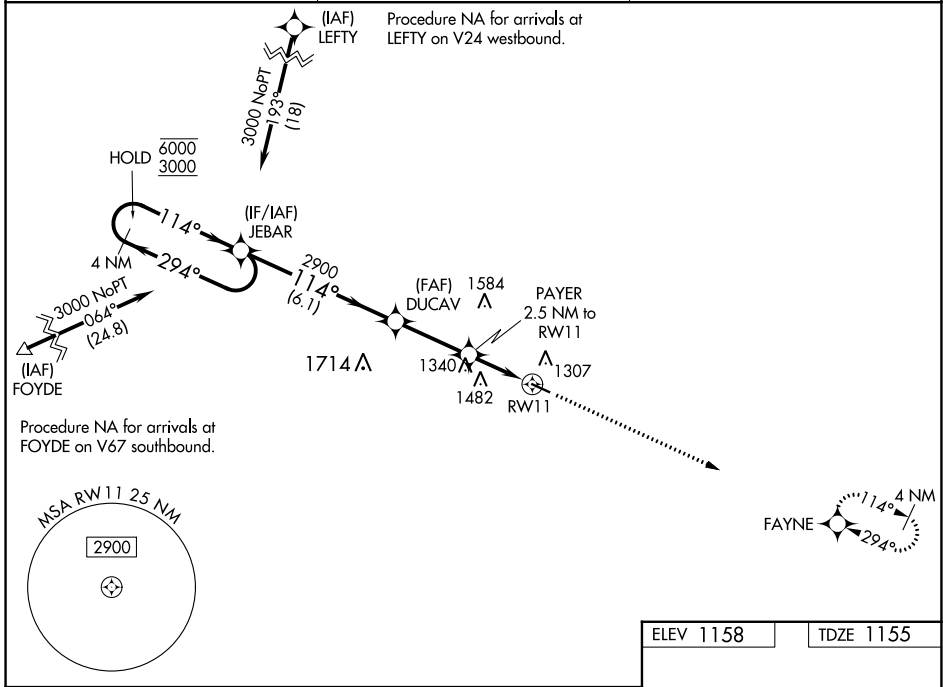
WAAS CH <b>78021</b> <b>W11A</b>	APP CRS <b>114°</b>	Rwy Idg <b>4001</b> TDZE <b>1155</b> Apt Elev <b>1158</b>
--	------------------------	---

# RNAV (GPS) RWY 11

DECORAH MUNI (DEH)

RNP APCH.	MISSED APPROACH: Climb to 3200 direct FAYNE and hold.
<p>▼ For uncompensated Baro-VNAV systems, LNAV/VNAV NA below -17°C or above 54°C.</p>	

AWOS-3 <b>120.925</b>	MINNEAPOLIS CENTER <b>118.85</b>	UNICOM <b>122.8</b> (CTAF) <b>0</b>
--------------------------	-------------------------------------	--



ELEV 1158	TDZE 1155
<p>3200 FAYNE</p> <p>*RNAV only.</p> <p>1.3 NM to RWY 11</p> <p>0.3% UP</p> <p>4001 X 75</p>	
<p>REIL Rwy 11 and 29 <b>0</b></p> <p>MIRL Rwy 11-29 <b>0</b></p>	

CATEGORY	A	B	C	D
LPV DA	1405-1	250 (300-1)		NA
LNAV/VNAV DA	1405-1	250 (300-1)		NA
LNAV MDA	1600-1	445 (500-1)		NA
CIRCLING	1600-1 442 (500-1)	1620-1 462 (500-1)		NA

NC-3, 05 SEP 2024 to 03 OCT 2024

NC-3, 05 SEP 2024 to 03 OCT 2024