

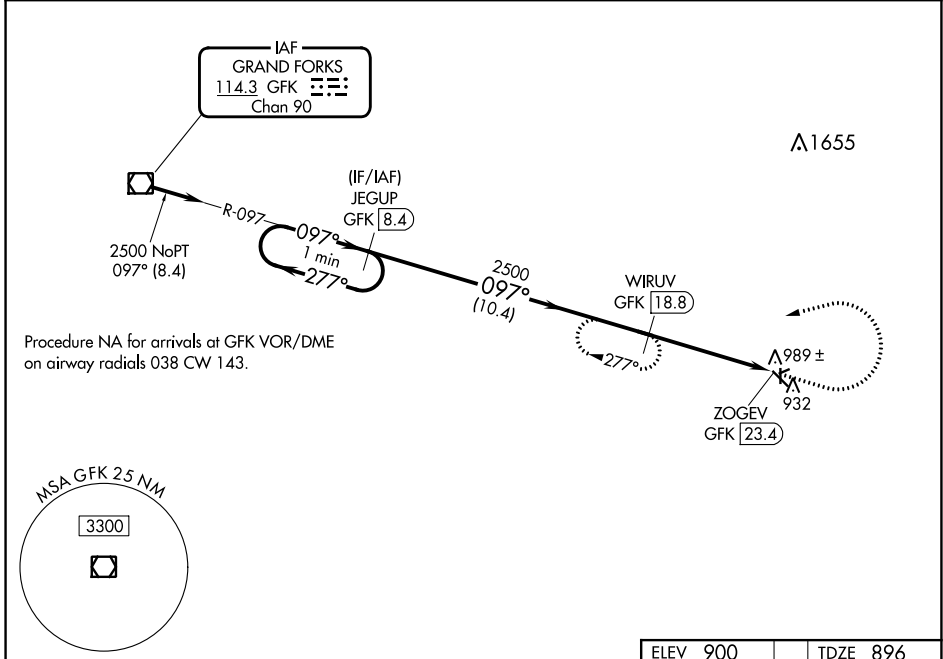
VOR/DME GFK 114.3 Chan 90	APP CRS 097°	Rwy Idg TDZE Apt Elev	4300 896 900
---	------------------------	-----------------------------	---

VOR/DME RWY 13
CROOKSTON MUNI/KIRKWOOD FLD (CKN)

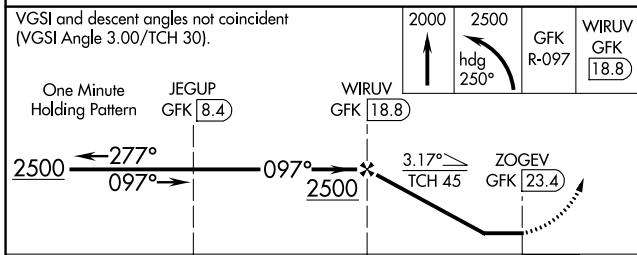
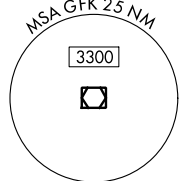
⚠ When local altimeter setting not received, use Grand Forks Intl altimeter setting. Circling Rwsy 6, 24, 17, 35 NA at night.

MISSED APPROACH: Climb to 2000 then climbing left turn to 2500 heading 250° and GFK VOR/DME R-097 to WIRUV/GFK 18.8 DME and hold.

AWOS-3 126.425	GRAND FORKS APP CON* 118.1 318.1	UNICOM 122.7 (CTAF) 0
--------------------------	--	---------------------------------

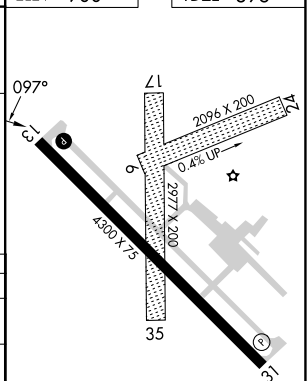


Procedure NA for arrivals at GFK VOR/DME on airway radials 038 CW 143.



ELEV 900	TDZE 896
----------	----------

CATEGORY	A	B	C	D
S-13	1400-1	504 (500-1)	1400-1 ³ / ₈ 504 (500-1 ³ / ₈)	NA
CIRCLING	1400-1	500 (500-1)	1480-1 ¹ / ₂ 580 (600-1 ¹ / ₂)	NA
GRAND FORKS INTL ALTIMETER MINIMUMS				
S-13	1480-1	584 (600-1)	1480-1 ³ / ₄ 584 (600-1 ³ / ₄)	NA
CIRCLING	1480-1	580 (600-1)	1560-1 ³ / ₄ 660 (700-1 ³ / ₄)	NA



REIL Rwsy 13 and 31 **0**
MIRL Rwy 13-31 **0**

NC-1, 05 SEP 2024 to 03 OCT 2024

NC-1, 05 SEP 2024 to 03 OCT 2024