

VORTAC LIB <b>113.0</b> Chan 77	APP CRS <b>209°</b>	Rwy ldg TDZE Apt Elev	<b>N/A</b> <b>N/A</b> <b>616</b>
---------------------------------------	------------------------	-----------------------------	--

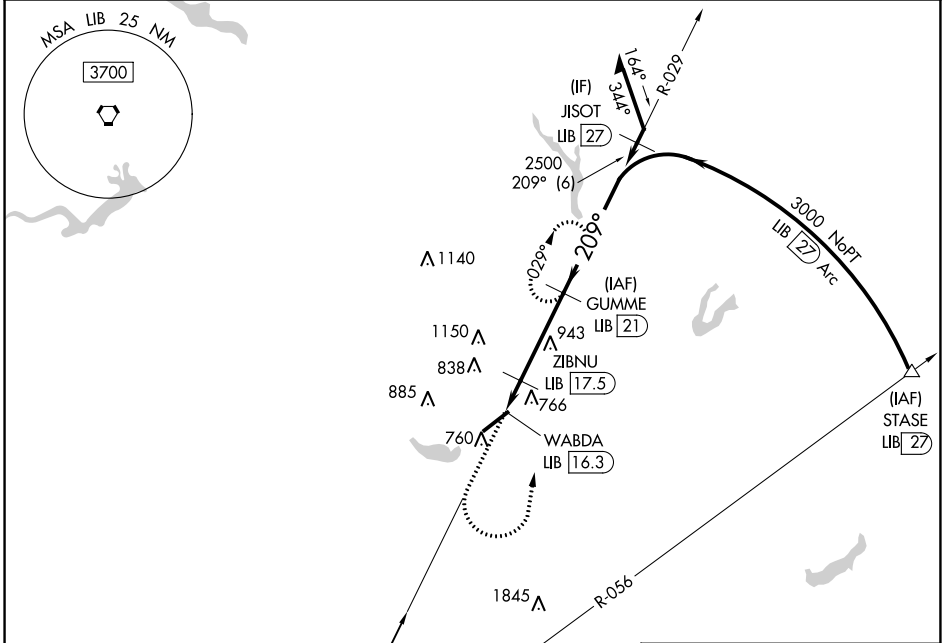
# VOR/DME-A

BURLINGTON/ALAMANCE RGNL (BUY)

**⚠** When local altimeter setting not received, use Greensboro altimeter setting and increase all MDA 100 feet and increase Cat C visibility 1/4 mile.

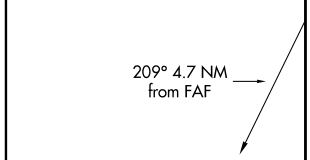
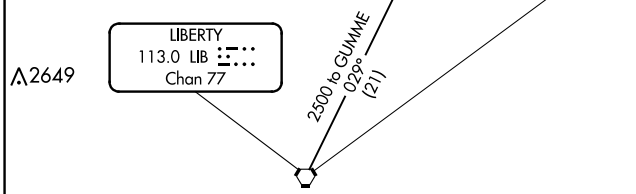
**⚠** MISSED APPROACH: Climb to 1400 then climbing left turn to 2500 on heading 350° and LIB R-029 to GUMME/21 DME and hold.

ASOS <b>135.325</b>	GREENSBORO APP CON <b>126.6 327.075</b>	CLNC DEL <b>120.25</b>	UNICOM <b>122.975 (CTAF) 0</b>
------------------------	--	---------------------------	-----------------------------------

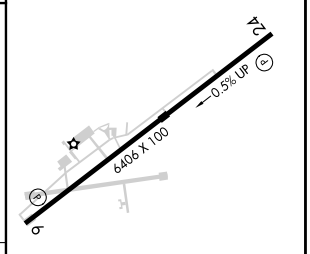
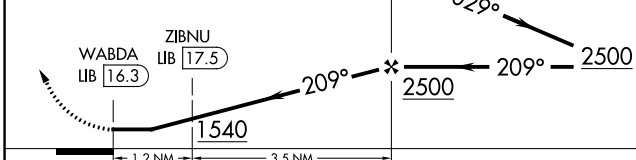


**LIBERTY**  
113.0 LIB  
Chan 77

ELEV 616



1400	2500	LIB R-029	GUMME LIB 21	GUMME LIB 21	Remain within 10 NM
↑	hdg 350°				



CATEGORY	A	B	C	D
CIRCLING	1100-1	484 (500-1)	1520-2 <sup>3</sup> / <sub>4</sub> 904 (1000-2 <sup>3</sup> / <sub>4</sub> )	1520-3 904 (1000-3)

HIRL Rwy 6-24 0

REL Rwy 6 and 24 0

# VOR/DME-A

SE-2, 05 SEP 2024 to 03 OCT 2024

SE-2, 05 SEP 2024 to 03 OCT 2024