

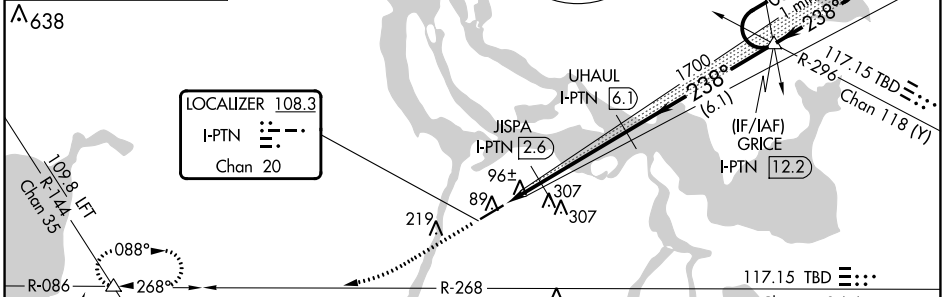
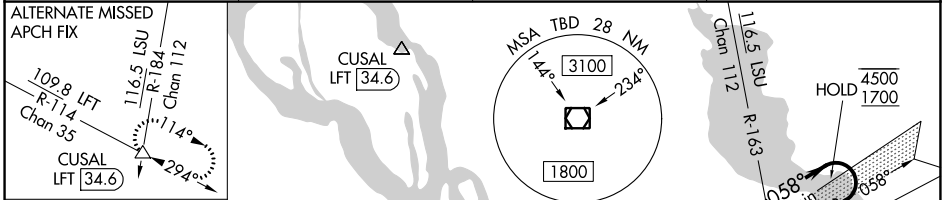
LOC/DME I-PTN 108.3 Chan 20	APP CRS 238°	Rwy ldg 5399 TDZE 9 Apt Elev 9
--	------------------------	--

ILS or LOC RWY 24

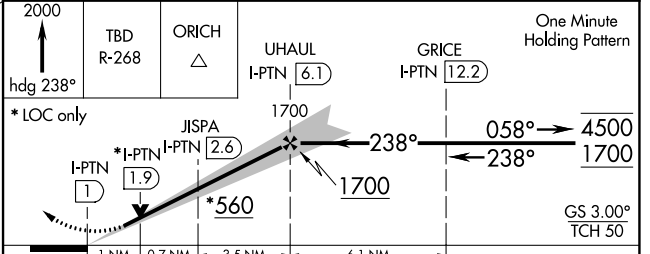
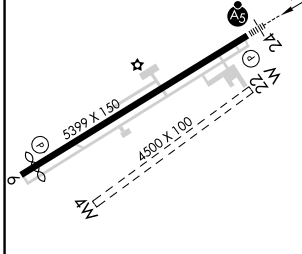
HARRY P WILLIAMS MEML (PTN)

DME required.	MALSR	MISSED APPROACH: Climb to 2000 on heading 238° and TBD VOR/DME R-268 to ORICH INT/ TBD 40.2 DME and hold.
<p>▼ Circling NA to Rwys 4W and 22W. For inop ALS, increase S-LOC 24 Cat C visibility to 1 SM.</p> <p>▲ NA</p>		

AWOS-3PT 134.575	NEW ORLEANS APP CON 124.3 350.35	CLNC DEL 124.3	UNICOM 122.8 (CTAF)
----------------------------	--	--------------------------	-------------------------------



ELEV 9	TDZE 9
--------	--------



CATEGORY	A	B	C	D
S-ILS 24	209-1/2		200 (200-1/2)	NA
S-LOC 24	360-1/2	351 (400-1/2)	360-5/8 351 (400-5/8)	NA
CIRCLING	520-1 511 (600-1)	660-1 651 (700-1)	660-1 3/4 651 (700-1 3/4)	NA

MIRL Rwy 6-24
REIL Rwy 6

SC-4, 05 SEP 2024 to 03 OCT 2024

SC-4, 05 SEP 2024 to 03 OCT 2024