

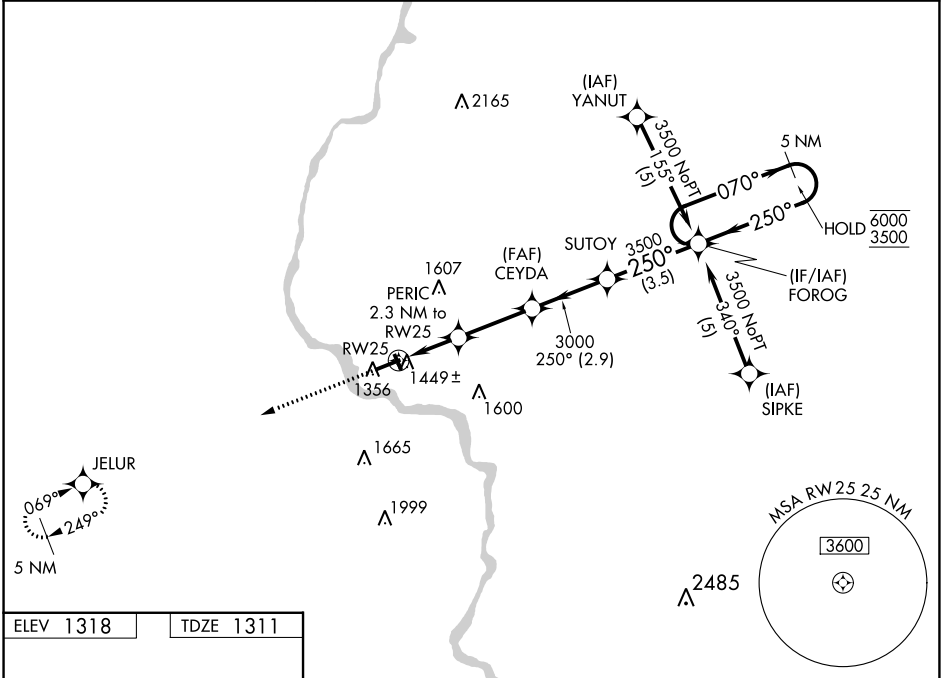
WAAS CH <b>49104</b> <b>W25A</b>	APP CRS <b>250°</b>	Rwy Idg TDZE Apt Elev	<b>5100</b> <b>1311</b> <b>1318</b>
----------------------------------------	------------------------	-----------------------------	-------------------------------------------

# RNAV (GPS) RWY 25

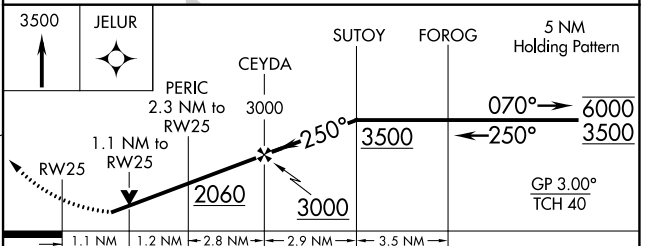
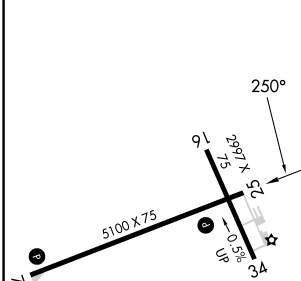
MERRILL MUNI (R.R.L.)

RNP APCH - GPS.	MISSED APPROACH: Climb to 3500 direct JELUR and hold.
<p><b>⚠</b> Circling Rwy 16, 34 NA at night. Rwy 25 helicopter visibility reduction below <math>\frac{3}{4}</math> SM NA. For uncompensated Baro-VNAV systems, LNAV/VNAV NA below -17°C or above 54°C.</p>	

AWOS-3 <b>119.925</b>	MINNEAPOLIS CENTER <b>124.4 317.7</b>	UNICOM <b>122.8 (CTAF)</b>
--------------------------	------------------------------------------	-------------------------------



ELEV <b>1318</b>	TDZE <b>1311</b>
------------------	------------------



CATEGORY	A	B	C	D
LPV DA	1640-1	329 (400-1)		NA
LNAV/VNAV DA	1719-1½	408 (500-1½)		NA
LNAV MDA	1700-1	389 (400-1)	1700-1½ 389 (400-1½)	NA
<b>C</b> CIRCLING	1760-1 442 (500-1)	1780-1 462 (500-1)	1920-1¾ 602 (700-1¾)	NA

EC-3, 05 SEP 2024 to 03 OCT 2024

EC-3, 05 SEP 2024 to 03 OCT 2024