

(ICONS5.ICONS) 24081

AL-5726 (FAA)

# ICONS FIVE DEPARTURE (RNAV)

CHARLOTTE/MONROE EXEC (EQY)  
MONROE, NORTH CAROLINA

CHARLOTTE DEP CON  
120.05 307.8  
ASOS  
135.775  
CLNC DEL  
132.55  
UNICOM  
122.7

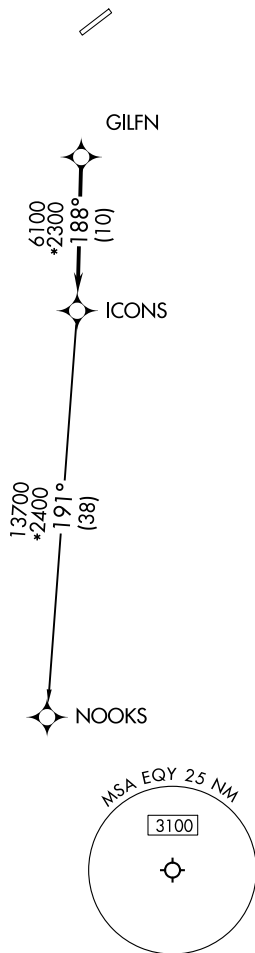
RNAV - 1 DME/DME/IRU or GPS.

RADAR required.

**TOP ALTITUDE:  
3000**

TAKEOFF MINIMUMS  
Rwys 5, 23: Standard.

- NOTE: For turbo jets only.
- NOTE: If unable to accept climb rates, advise ATC on initial contact.
- NOTE: Transponder code will be issued via PDC or Charlotte CLNC DEL.
- NOTE: Upon reaching 10000 MSL, accelerate to and maintain 280K, if unable advise ATC.



NOTE: Chart not to scale.



## DEPARTURE ROUTE DESCRIPTION

Climb on heading assigned by ATC, expect RADAR vectors to GILFN, then on track 188° to ICONS. Then on NOOKS Transition. Maintain 3000, expect filed altitude within 10 minutes after departure.

NOOKS TRANSITION (ICONS5.NOOKS)

ICONS FIVE DEPARTURE (RNAV)  
(ICONS5.ICONS) 21MAR24

MONROE, NORTH CAROLINA  
CHARLOTTE/MONROE EXEC (EQY)

SE-2, 05 SEP 2024 to 03 OCT 2024

SE-2, 05 SEP 2024 to 03 OCT 2024