

(KER4.KER) 24081
KERMIT FOUR DEPARTURE

AL-5726 (FAA)

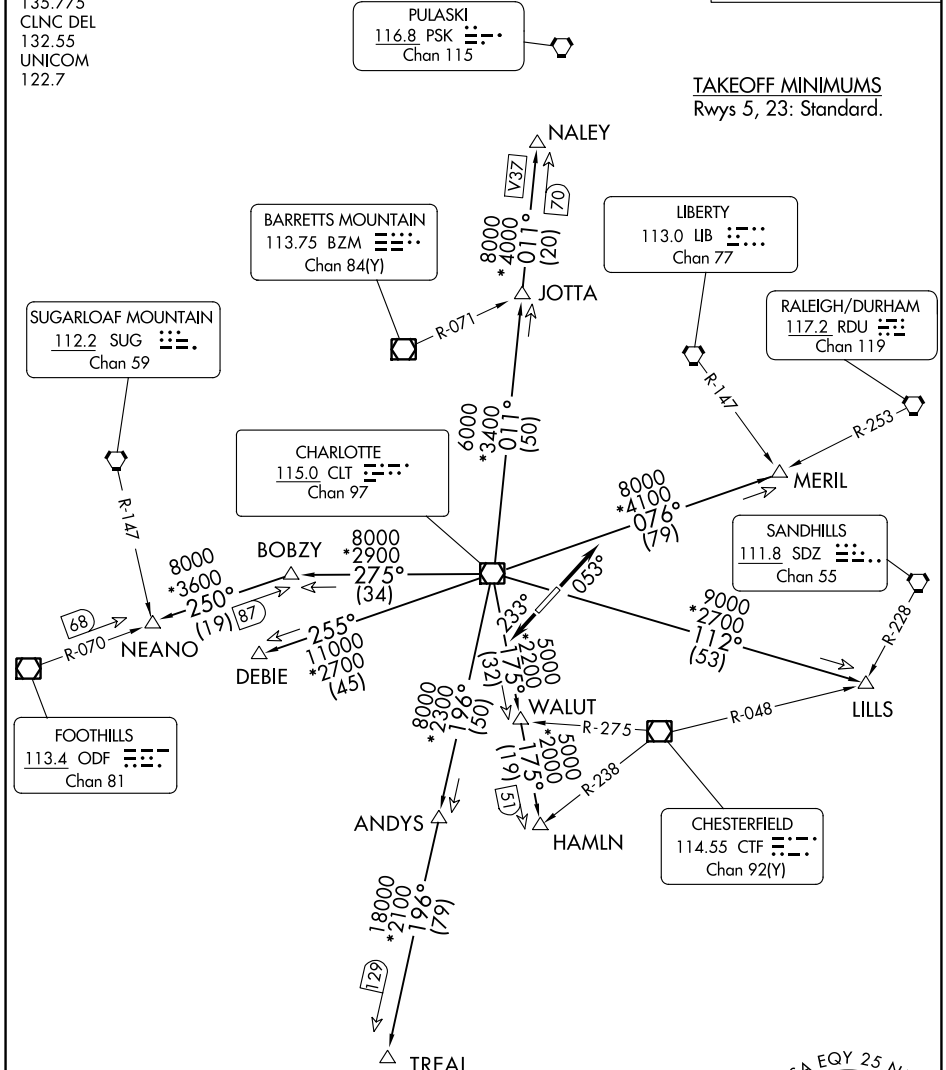
CHARLOTTE/MONROE EXEC (EQY)
 MONROE, NORTH CAROLINA

CHARLOTTE DEP CON
 120.05 307.8
 ASOS
 135.775
 CLNC DEL
 132.55
 UNICOM
 122.7

RADAR and DME required.

**TOP ALTITUDE:
 3000**

TAKEOFF MINIMUMS
 Rwy 5, 23: Standard.



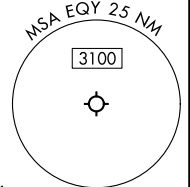
SE-2, 05 SEP 2024 to 03 OCT 2024

SE-2, 05 SEP 2024 to 03 OCT 2024

NOTE: For turbo jet aircraft only.
 NOTE: Upon reaching 10000 MSL, accelerate to and maintain 280K, if unable advise ATC.
 NOTE: Transponder code will be issued via Charlotte clearance delivery.

NOTE: Chart not to scale.

(CONTINUED ON FOLLOWING PAGE)



KERMIT FOUR DEPARTURE
(KER4.KER) 21MAR24

MONROE, NORTH CAROLINA
CHARLOTTE/MONROE EXEC (EQY)