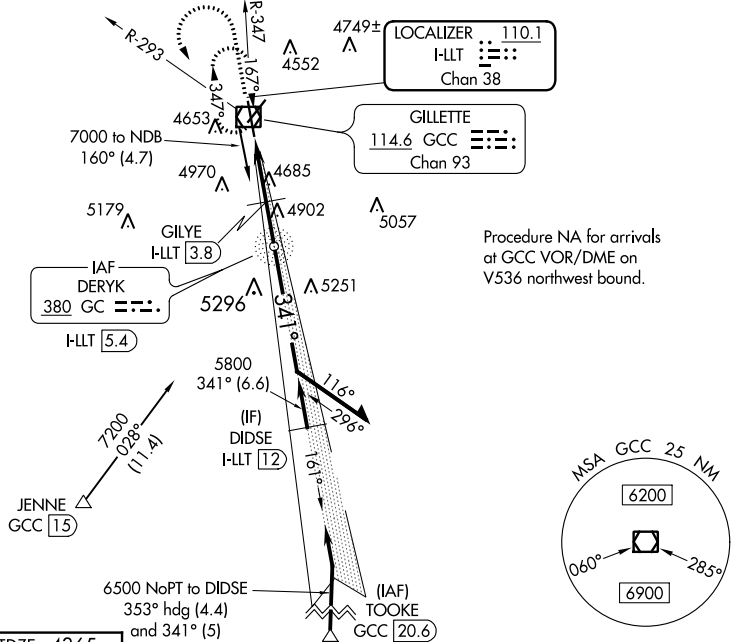


LOC/DME I-LLT 110.1 Chan 38	APP CRS 341°	Rwy Idg TDZE Apt Elev	7500 4365 4365
---	------------------------	-----------------------------	---

ILS or LOC RWY 34

NORTHEAST WYOMING RGNL (GCC)

ADF or DME required.		MALSR	MISSED APPROACH: Climb to 5700 then climbing left turn to 7000 on heading 150° and on GCC VOR/DME R-293 to GCC VOR/DME and hold, continue climb-in-hold to 7000.
ASOS 124.175	DENVER CENTER 135.6 363.025	UNICOM 122.95	CTAF 118.5

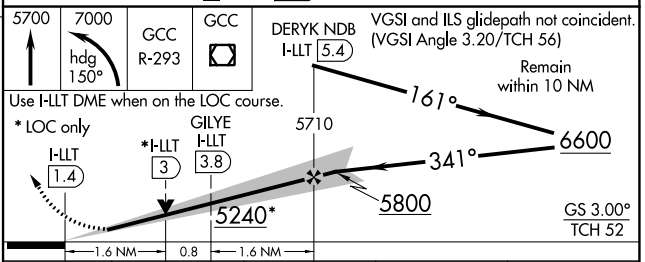
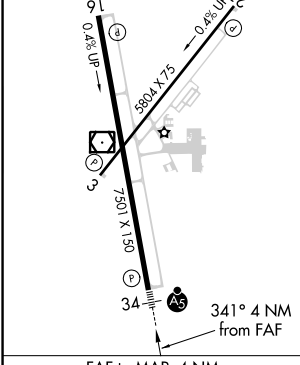


NW-1, 05 SEP 2024 to 03 OCT 2024

NW-1, 05 SEP 2024 to 03 OCT 2024

ELEV 4365	D	TDZE 4365
------------------	----------	------------------

HIRL Rwy 16-34
REIL Rwys 3, 16, and 21
MIRL Rwy 3-21



CATEGORY	A	B	C	D
S-ILS 34	4565-1/2 200 (200-1/2)			
S-LOC 34	5240-1/2 875 (900-1/2)	5240-3/4 875 (900-3/4)	5240-2	875 (900-2)
C CIRCLING	5240-1 1/4	875 (900-1 1/4)	5400-3	1035 (1100-3)
GILYE FIX MINIMUMS				
S-LOC 34	4940-1/2	575 (600-1/2)	4940-1 1/4	575 (600-1 1/4)
C CIRCLING	5040-1 675 (700-1)	5240-1 1/4 875 (900-1 1/4)	5400-3	1035 (1100-3)

FAF to MAP 4 NM					
Knots	60	90	120	150	180
Min:Sec	4:00	2:40	2:00	1:36	1:20

GILLETTE, WYOMING
Amdt 4A 17JUN21

44°21'N-105°32'W

NORTHEAST WYOMING RGNL (GCC)

ILS or LOC RWY 34