

WAAS CH 86204 W34A	APP CRS 341°	Rwy Idg TDZE Apt Elev	7500 4365 4365
----------------------------------------	------------------------	-----------------------------	-------------------------------------------

RNAV (GPS) RWY 34

NORTHEAST WYOMING RGNL (GCC)

RNP APCH.

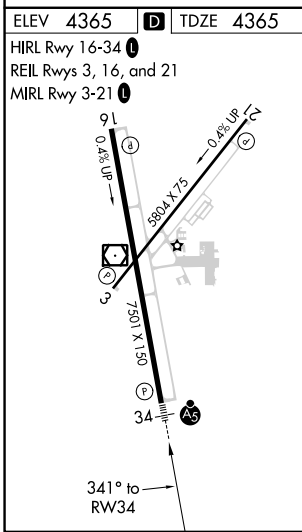
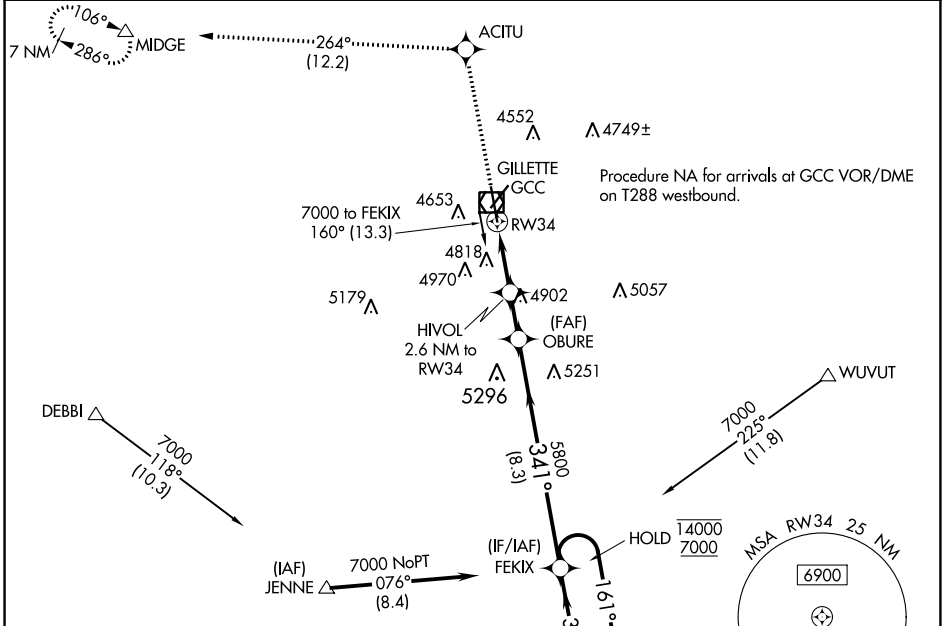
⚠ Circling Rwy 3 NA at night. Inop table does not apply to LPV and LNAV/VNAV. For uncompensated Baro-VNAV systems, LNAV/VNAV NA below -23°C or above 54°C. For inop ALS, increase LNAV Cat A visibility to 1 SM, and Cat C/D to 2 SM. Rwy 34 helicopter visibility reduction below ¾ SM NA.

MALSR

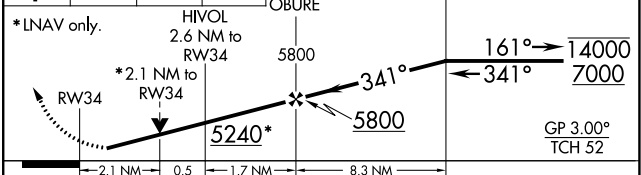


MISSED APPROACH:
Climb to 7000 direct ACITU and on track 264° to MIDGE and hold.

ASOS 124.175	DENVER CENTER 135.6 363.025	UNICOM 122.95	CTAF 118.5
------------------------	---------------------------------------	-------------------------	----------------------



ELEV 4365	D	TDZE 4365
HIRL Rwy 16-34		
REIL Rwys 3, 16, and 21		
MIRL Rwy 3-21		



CATEGORY	A	B	C	D
LPV DA		4620-¾	255 (300-¾)	
LNAV/VNAV DA		5480-4	1115 (1200-4)	
LNAV MDA	5120-¾	755 (800-¾)	5120-1¾	755 (800-1¾)
C CIRCLING	5120-1 755 (800-1)	5240-1¼ 875 (900-1¼)	5400-3	1035 (1100-3)

NW-1, 05 SEP 2024 to 03 OCT 2024

NW-1, 05 SEP 2024 to 03 OCT 2024