

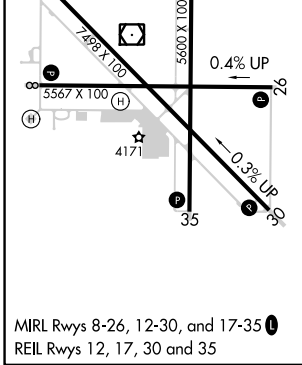
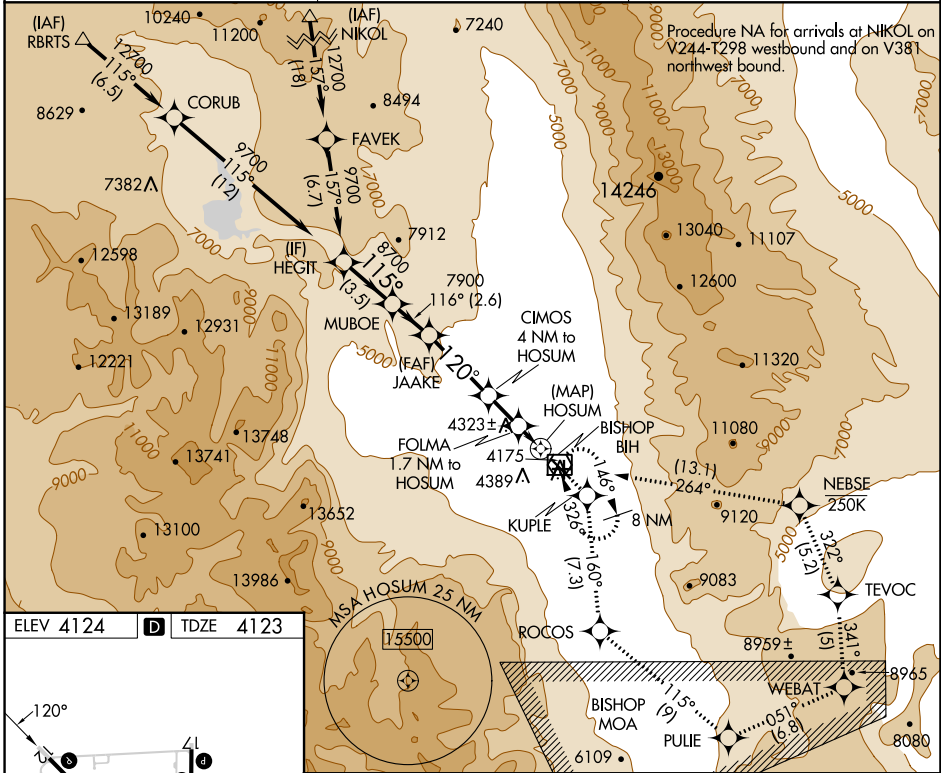
APP CRS	Rwy ldg	<b>7098</b>
<b>120°</b>	TDZE	<b>4123</b>
	Apt Elev	<b>4124</b>

# RNAV (GPS) Z RWY 12

BISHOP (BIH)

RNP APCH-GPS.	MISSED APPROACH: (Do not exceed 250 KIAS until NEBSE) Climb to 13000 direct KUPLE and on track 160° to ROCOS and on track 115° to PULIE and on track 051° to WEBAT and on track 341° to TEVOC and on track 322° to NEBSE and on track 264° to BIH VOR/DME and hold.
<p><b>⚠</b> Rwy 12, helicopter visibility reduction below 3/4 SM NA.</p> <p><b>⚠</b> Missed approach requires minimum climb of 325 feet per NM to 11000; if unable, see RNAV (GPS) Y RWY 12.</p>	

ASOS <b>119.025</b>	OAKLAND CENTER <b>125.75 284.65</b>	UNICOM <b>123.0 (CTAF)</b>
------------------------	--	-------------------------------



HEGIT	Visual Segment - Obstacles.			13000	KUPLE	tr 160°	ROCOS
MUBOE	JAAKE						
9700	8700	7900	6200	5200			
3.5 NM		2.6 NM	4.5 NM	2.3 NM	1.7 NM	1 NM	
CATEGORY	A	B	C	D			
LNAV MDA	4580-1 1/4			457 (500-1 1/4)			NA
<b>C</b> CIRCLING	6420-1 1/4	6420-1 1/2	6420-3				NA
	2296 (2300-1 1/4)	2296 (2300-1 1/2)	2296 (2300-3)				

SW-2, 05 SEP 2024 to 03 OCT 2024

SW-2, 05 SEP 2024 to 03 OCT 2024