

CAIRO, ILLINOIS

AL-5738 (FAA)

23278

WAAS CH <b>77932</b> <b>W14A</b>	APP CRS <b>141°</b>	Rwy Idg TDZE Apt Elev	<b>4001</b> <b>322</b> <b>322</b>
--	------------------------	-----------------------------	---

# RNAV (GPS) RWY 14

CAIRO RGNL (CIR)

RNP APCH.

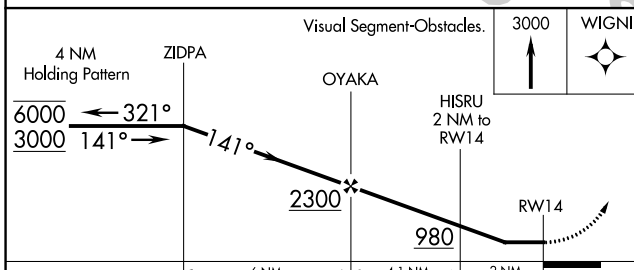
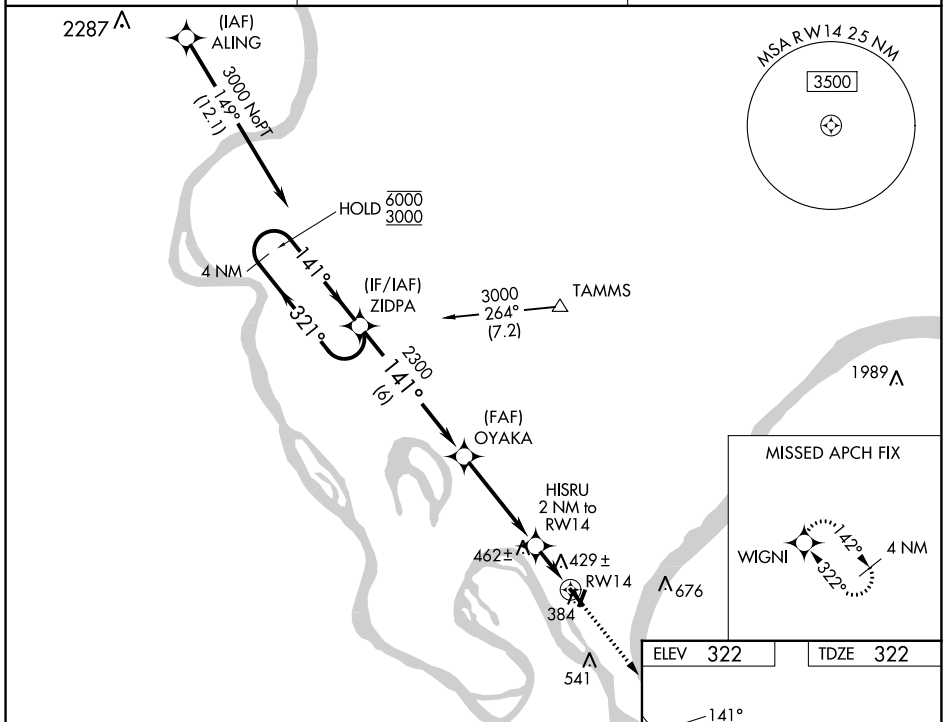
**▼** Procedure NA at night.  
**▲** Rwy 14 helicopter visibility reduction below 1 SM NA.

MISSED APPROACH:  
Climb to 3000 direct  
WIGNI and hold.

AWOS-3  
**118.025**

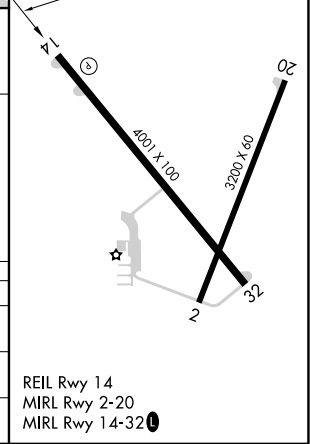
MEMPHIS CENTER  
**133.65 292.15**

UNICOM  
**122.8 (CTAF) 0**



ELEV	322	TDZE	322
------	-----	------	-----

CATEGORY	A	B	C	D
LP MDA	680-1 358 (400-1)			NA
LNAV MDA	720-1	398 (400-1)	720-1 1/8 398 (400-1 1/8)	NA
CIRCLING	780-1 458 (500-1)	900-1 578 (600-1)	1020-2 698 (700-2)	NA



REIL Rwy 14  
MIRL Rwy 2-20  
MIRL Rwy 14-32 0

EC-3, 05 SEP 2024 to 03 OCT 2024

EC-3, 05 SEP 2024 to 03 OCT 2024

CAIRO, ILLINOIS  
Orig-C 16JUL20

37°04'N-89°13'W

# CAIRO RGNL (CIR) RNAV (GPS) RWY 14