

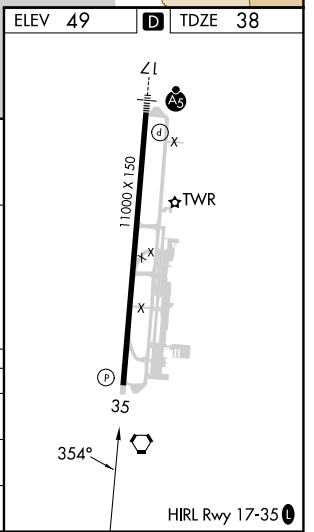
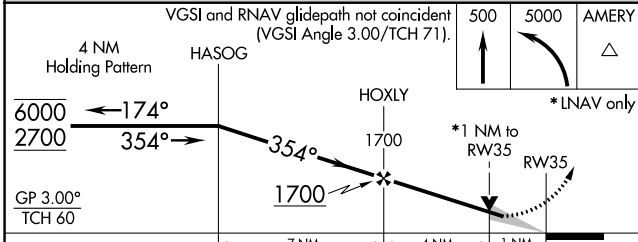
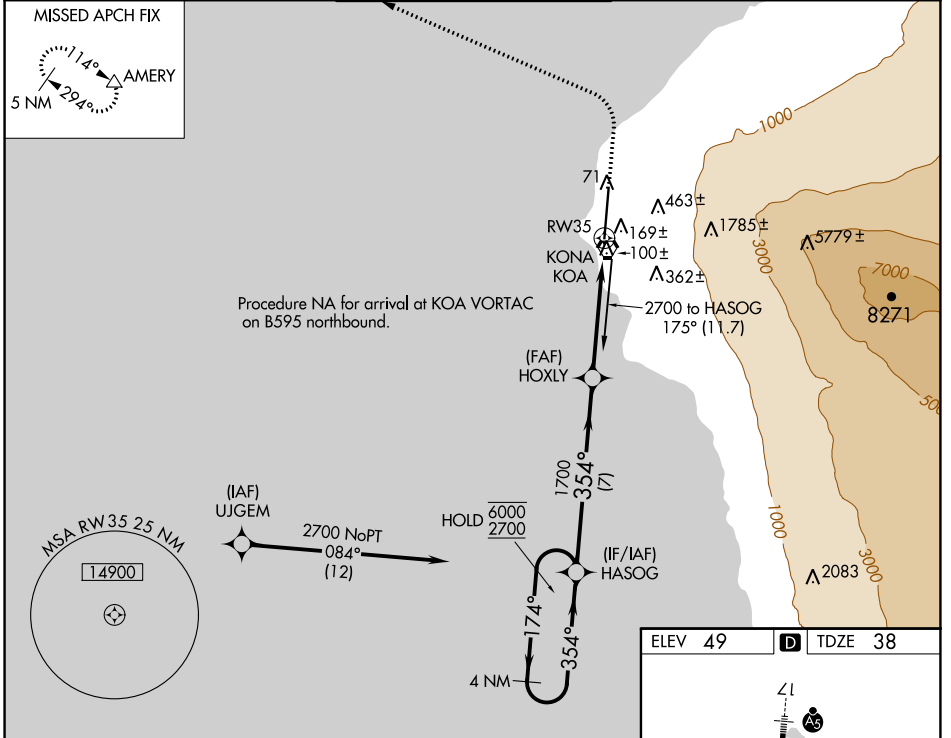
APP CRS	Rwy Idg	<b>11000</b>
<b>354°</b>	TDZE	<b>38</b>
	Apt Elev	<b>49</b>

# RNAV (GPS) RWY 35

ELLISON ONIZUKA KONA INTL AT KEAHOLE (KOA) (PHKO)

RNP APCH - GPS.		MISSED APPROACH: Climb to 500 then climbing left turn to 5000 direct AMERY and hold.	
<p><b>⚠</b> Circling NA east of Rwy 17-35. WAAS VNAV NA. For uncompensated Baro-VNAV systems, LNAV/VNAV NA below 17°C or above 54°C.</p>			

ATIS <b>127.4</b>	HCF CENTER <b>118.45 278.3</b>	KONA TOWER* <b>120.3 (CTAF) 254.3</b>	GND CON <b>121.9</b>	CLNC DEL <b>118.6</b>
----------------------	-----------------------------------	--	-------------------------	--------------------------



CATEGORY	A	B	C	D	E
LNAV/ VNAV DA	366-1 328 (400-1)				
LNAV MDA	420-1 382 (400-1)	420-1½ 382 (400-1½)			
<b>C</b> CIRCLING	520-1 471 (500-1)	520-1½ 471 (500-1½)	600-2 551 (600-2)		

PAC, 05 SEP 2024 to 31 OCT 2024

PAC, 05 SEP 2024 to 31 OCT 2024