

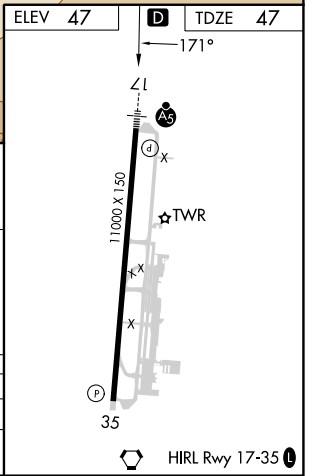
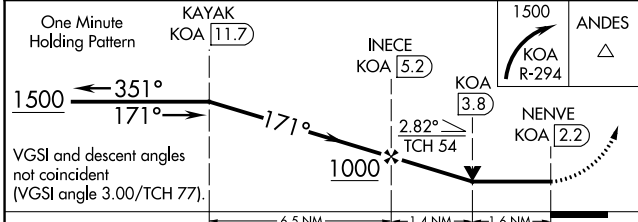
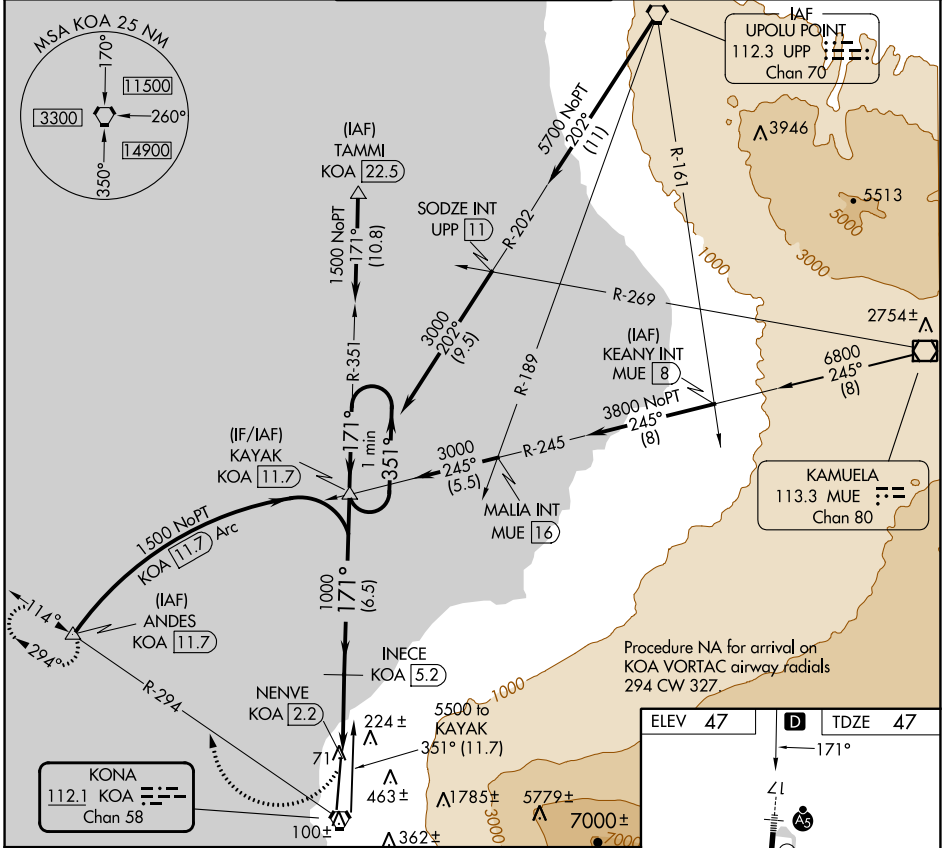
VORTAC KOA 112.1 Chan 58	APP CRS 171°	Rwy Idg 11000 TDZE 47 Apt Elev 47
--	------------------------	--

VOR or TACAN RWY 17

ELLISON ONIZUKA KONA INTL AT KEAHOLE (KOA) (PHKO)

DME required.		MALSR	MISSED APPROACH: Climbing right turn to 1500 on KOA VORTAC R-294 to ANDES/11.7 DME and hold.
<p>⚠ Circling NA east of Rwy 17-35. For inop ALS, increase S-17 Cat A, B visibility to 1 mile, Cat E visibility to 1½ mile.</p>			

ATIS 127.4	HCF CENTER 118.45 278.3	KONA TOWER* 120.3 (CTAF) 254.3	GND CON 121.9	CINC DEL 118.6
----------------------	-----------------------------------	---	-------------------------	--------------------------



CATEGORY	A	B	C	D	E
S-17	600-¾ 553 (600-¾)		600-1½ 553 (600-1½)		
CIRCLING	600-1 553 (600-1)		600-1½ 553 (600-1½)	600-2 553 (600-2)	

PAC, 05 SEP 2024 to 31 OCT 2024

PAC, 05 SEP 2024 to 31 OCT 2024