

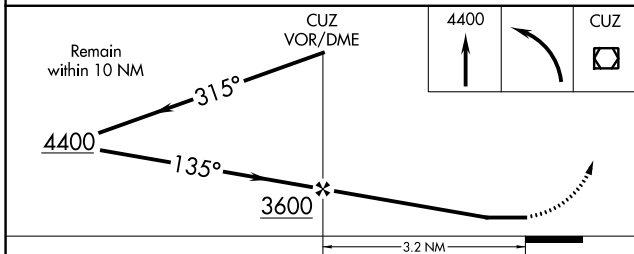
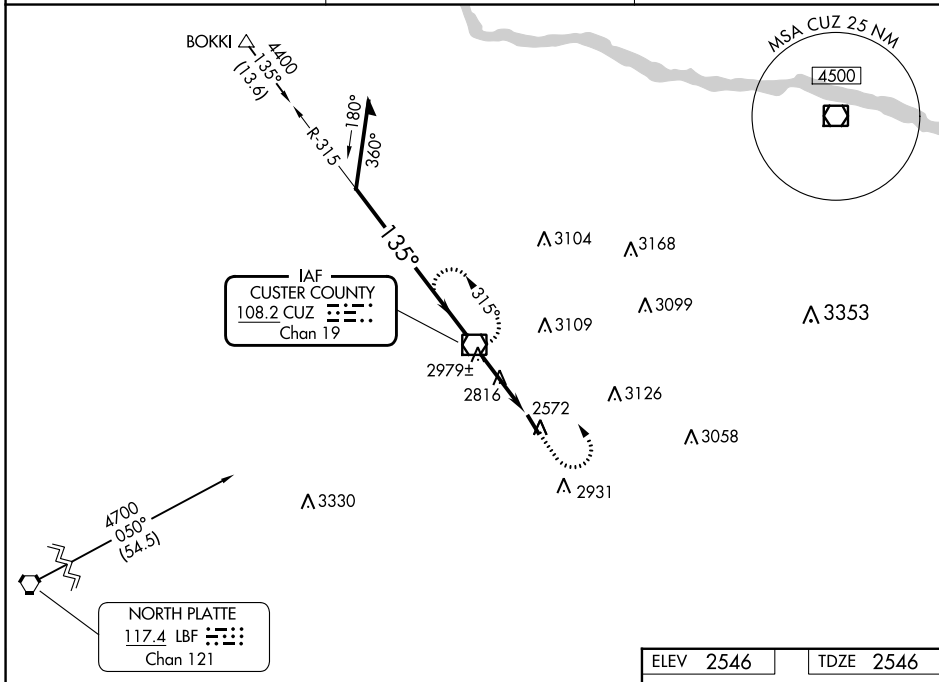
VOR/DME CUZ <b>108.2</b> Chan <b>19</b>	APP CRS <b>135°</b>	Rwy Idg <b>4203</b> TDZE <b>2546</b> Apt Elev <b>2546</b>
---	------------------------	---

# VOR RWY 14

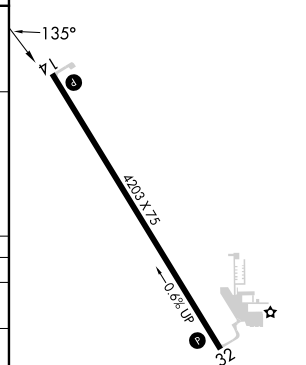
BROKEN BOW MUNI/KEITH GLAZE FLD (BBW)

**⚠** When local altimeter setting not received; use North Platte Rgnl/Lee Bird Fld altimeter setting. Rwy 14 helicopter visibility reduction below  $\frac{3}{4}$  SM NA. **MISSED APPROACH:** Climb to 4400 then left turn direct CUZ VOR/DME and hold.

ASOS <b>120.0</b>	DENVER CENTER <b>132.7 226.675</b>	UNICOM <b>122.8 (CTAF) 0</b>
----------------------	---------------------------------------	---------------------------------



ELEV <b>2546</b>	TDZE <b>2546</b>
------------------	------------------



CATEGORY	A	B	C	D
S-14	3240-1	694 (700-1)		NA
CIRCLING	3280-1	734 (800-1)		NA
NORTH PLATTE RGNL/LEE BIRD FLD ALTIMETER SETTING MINIMUMS				
S-14	3380-1 834 (900-1)	3380-1½ 834 (900-1½)		NA
CIRCLING	3440-1½	894 (900-1½)		NA

REIL Rwy 14 0				
MIRL Rwy 14-32 0				
FAF to MAP 3.2 NM				
Knots	60	90	120	150
Min:Sec	3:12	2:08	1:36	1:17

# VOR RWY 14

NC-2, 05 SEP 2024 to 03 OCT 2024

NC-2, 05 SEP 2024 to 03 OCT 2024