

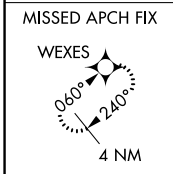
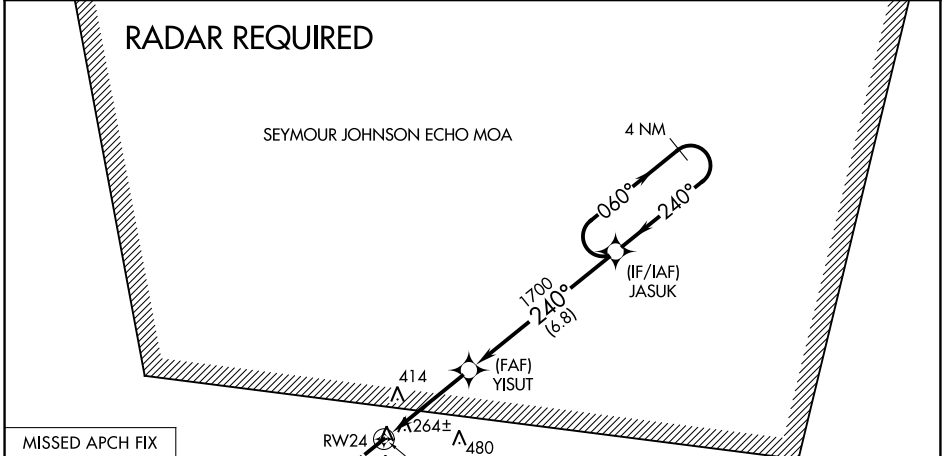
WAAS CH 82620 W24A	APP CRS 240°	Rwy Idg TDZE Apt Elev	5008 144 144
--	------------------------	-----------------------------	---

RNAV (GPS) Z RWY 24

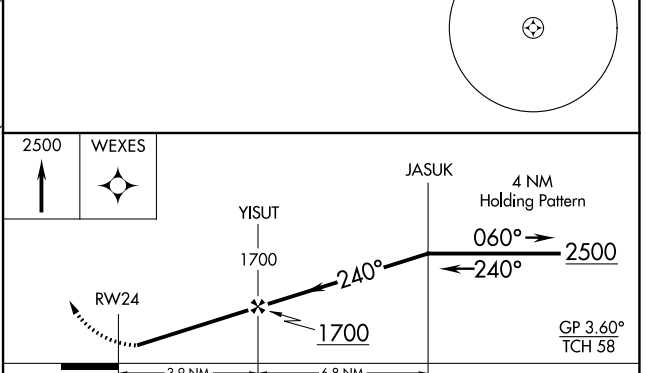
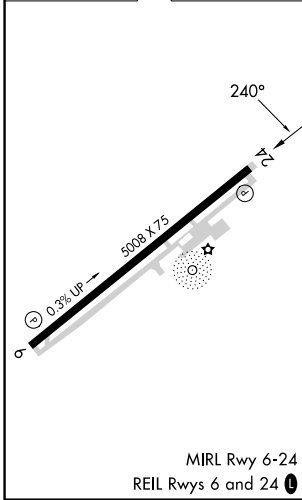
CLINTON-SAMPSON COUNTY (CTZ)

RNP APCH-GPS.	MISSED APPROACH: Climb to 2500 direct WEXES and hold.
---------------	---

AWOS-3 119.125	FAYETTEVILLE APP CON 133.0 290.25	UNICOM 122.8 (CTAF) 0
--------------------------	---	---------------------------------



ELEV 144	TDZE 144
----------	----------



GP 3.60° TCH 58				
CATEGORY	A	B	C	D
LPV DA	470-1		326 (400-1)	NA
LNAV/VNAV DA	566-1¼		422 (500-1¼)	NA

SE-2, 05 SEP 2024 to 03 OCT 2024

SE-2, 05 SEP 2024 to 03 OCT 2024