

WAAS CH 49144 W14A	APP CRS 140°	Rwy Idg TDZE Apt Elev	6000 181 187
--	------------------------	-----------------------------	---

RNAV (GPS) RWY 14

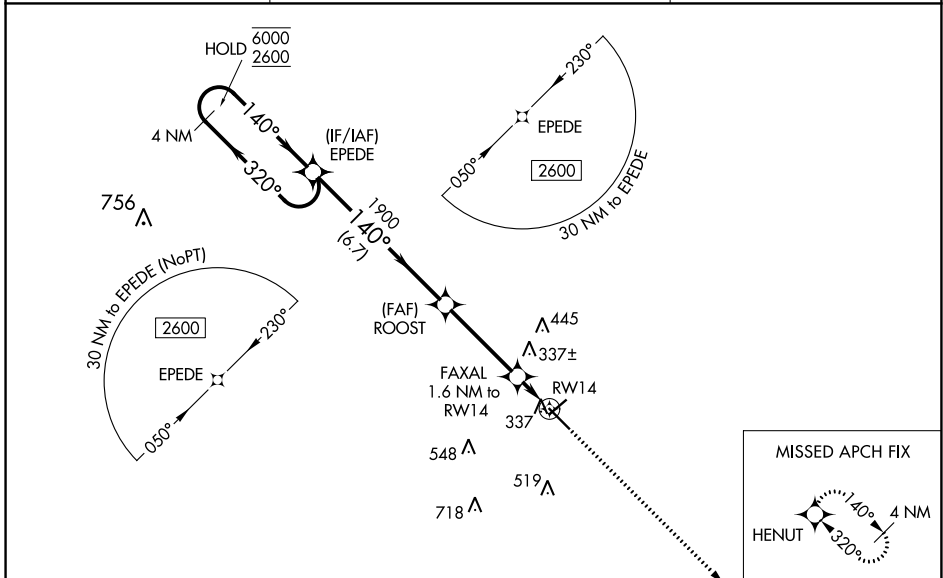
STATESBORO-BULLOCH COUNTY (TBR)

RNP APCH-GPS.

⚠ Circling to Rwy 6/24 NA at night. Baro-VNAV and VDP NA when using Sylvania altimeter setting.
Rwy 14 helicopter visibility reduction below 3/4 SM NA. For uncompensated Baro-VNAV systems, LNAV/VNAV NA below -15°C or above 54°C. When local altimeter setting not received, use Sylvania altimeter setting and increase LPV DA to 525 feet and all visibilities 1/8 SM. Increase LNAV/VNAV DA to 547 feet; increase all MDAs 40 feet and LNAV visibility Cat C/D 1/4 SM, and Circling visibility Cat C 1/4 SM.

MISSED APPROACH:
Climb to 2600 direct HENUT and hold.

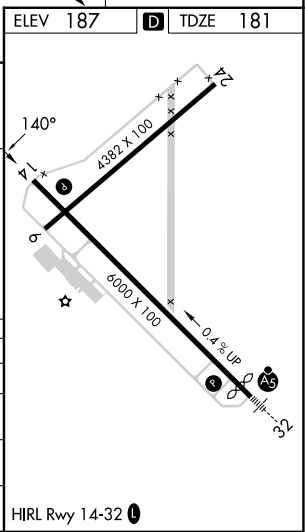
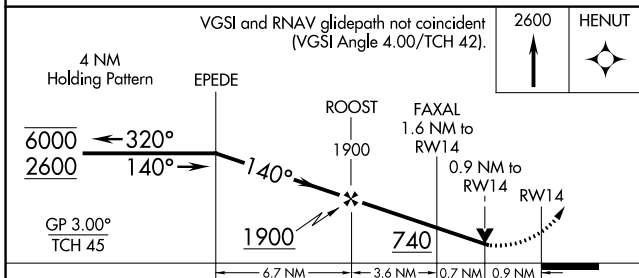
AWOS-3 119.025	SAVANNAH APP CON* 118.4 354.0	UNICOM 122.725 (CTAF)
--------------------------	---	---------------------------------



SE-4, 05 SEP 2024 to 03 OCT 2024

SE-4, 05 SEP 2024 to 03 OCT 2024

ELEV 187	D TDZE 181
----------	-------------------



CATEGORY	A	B	C	D
LPV DA		496-7/8	315 (400-7/8)	
LNAV/VNAV DA		518-1	337 (400-1)	
LNAV MDA	600-1	419 (500-1)	600-1 1/8	419 (500-1 1/8)
C CIRCLING	640-1 453 (500-1)	740-1 553 (600-1)	840-1 1/4 653 (700-1 1/4)	860-2 1/4 673 (700-2 1/4)

HIRL Rwy 14-32