

APP CRS 267°	Rwy ldg 4400
	TDZE 893
	Apt Elev 894

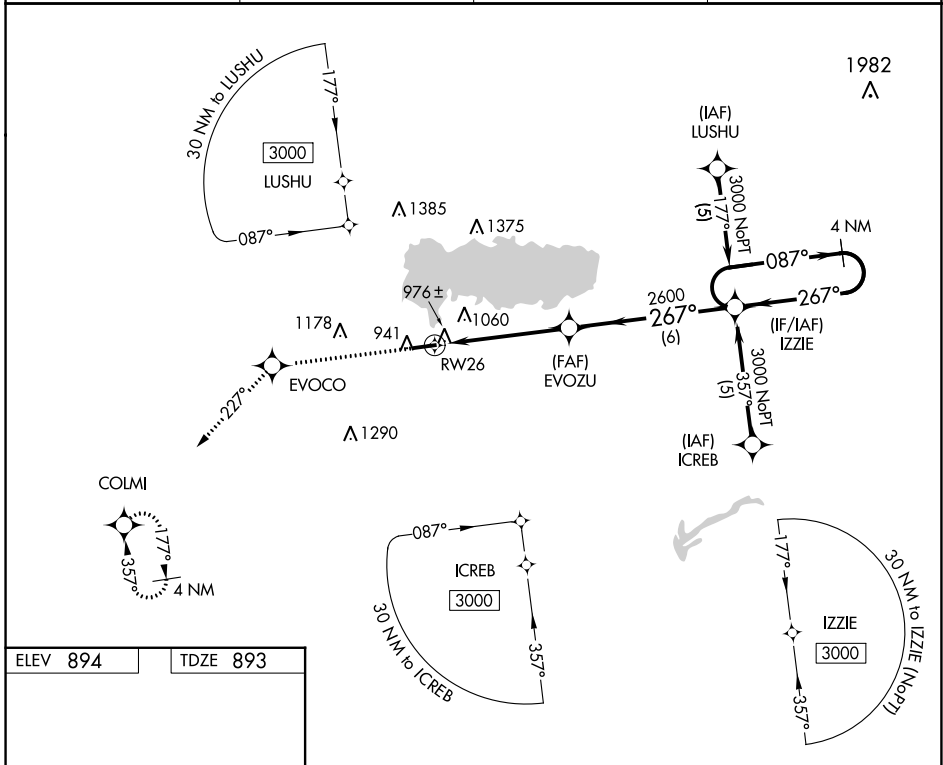
RNAV (GPS) RWY 26

LAKEFIELD (CQA)

⚠ DME/DME RNP-0.3 NA. Visibility reduction by helicopters NA. Baro-VNAV NA. Use Wapakoneta altimeter setting; when not received, use James M Cox Dayton Intl altimeter setting: increase LNAV/VNAV DA to 1349 feet and visibility all Cats ¼ SM; increase all MDA 80 feet and visibility LNAV and Circling Cat C ¼ SM.

⚠ MISSED APPROACH: Climb to 3000 direct EVOCO and on track 227° to COLMI and hold.

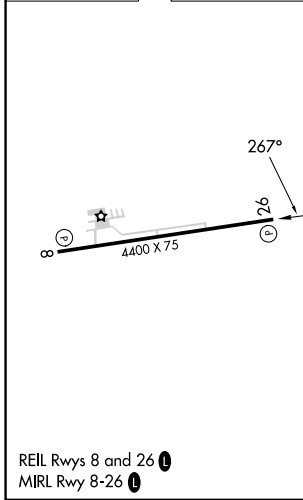
AXV AWO5-3PT 128.325	COLUMBUS APP CON 134.45 352.05	UNICOM 122.8 (CTAF)	123.3 ⓪
--------------------------------	--	-------------------------------	-----------------------



EC-2, 05 SEP 2024 to 03 OCT 2024

EC-2, 05 SEP 2024 to 03 OCT 2024

ELEV 894	TDZE 893
----------	----------



3000	EVOCO	tr 227°	COLMI	VGSI and RNAV glidepath not coincident (VGSI Angle 3.00/TCH 29).	4 NM Holding Pattern
					GP 3.20° TCH 40
					4.9 NM
					6 NM
CATEGORY	A	B	C	D	
LNAV/VNAV DA		1277-1¼	384 (400-1¼)		NA
LNAV MDA		1260-1	367 (400-1)		NA
CIRCLING	1360-1 466 (500-1)	1400-1 506 (600-1)	1480-1½ 586 (600-1½)		NA