

WAAS CH 61116 W08A	APP CRS 087°	Rwy ldg 4400
		TDZE 894
		Apt Elev 894

RNAV (GPS) RWY 8

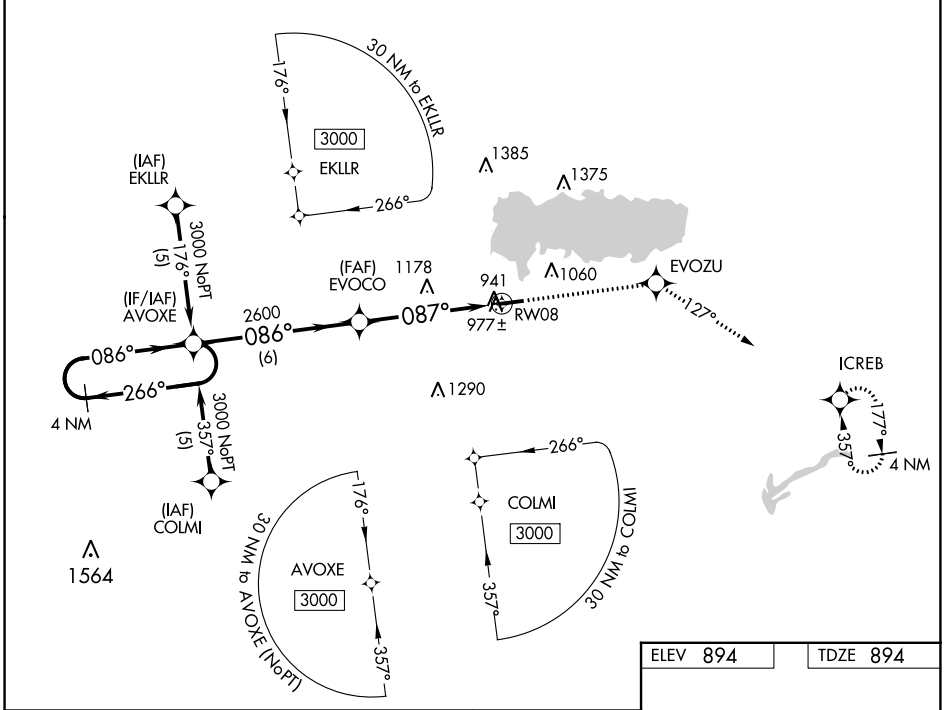
LAKEFIELD (CQA)

⚠ DME/DME RNP-0.3 NA. Visibility reduction by helicopters NA. Baro-VNAV NA. Use Wapakoneta altimeter setting. When not received use James M Cox Dayton Intl altimeter setting and increase all DA 73 feet and all MDA 80 feet; increase LPV Cats A/B/C visibility ¼ mile, LNAV/VNAV Cats A/B/C visibility ½ mile and LNAV and Circling Cat C visibility ¼ mile.

⚠ NA

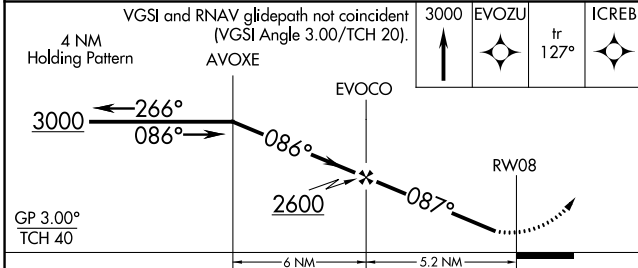
MISSED APPROACH: Climb to 3000 direct EVOZU and via track 127° to ICREB and hold.

AXV AWOS-3PT 128.325	COLUMBUS APP CON 134.45 352.05	UNICOM 122.8 (CTAF)	123.3 0
--------------------------------	--	-------------------------------	-----------------------



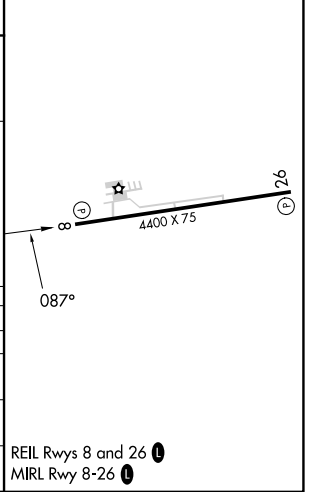
EC-2, 05 SEP 2024 to 03 OCT 2024

EC-2, 05 SEP 2024 to 03 OCT 2024



ELEV 894	TDZE 894
----------	----------

CATEGORY	A	B	C	D
LPV DA	1221-1¼	327 (400-1¼)		NA
LNAV/VNAV DA	1278-1¼	384 (400-1¼)		NA
LNAV MDA	1440-1	546 (600-1)	1440-1½ 546 (600-1½)	NA
CIRCLING	1440-1	546 (600-1)	1480-1½ 586 (600-1½)	NA



REIL Rwy 8 and 26 **0**
MIRL Rwy 8-26 **0**