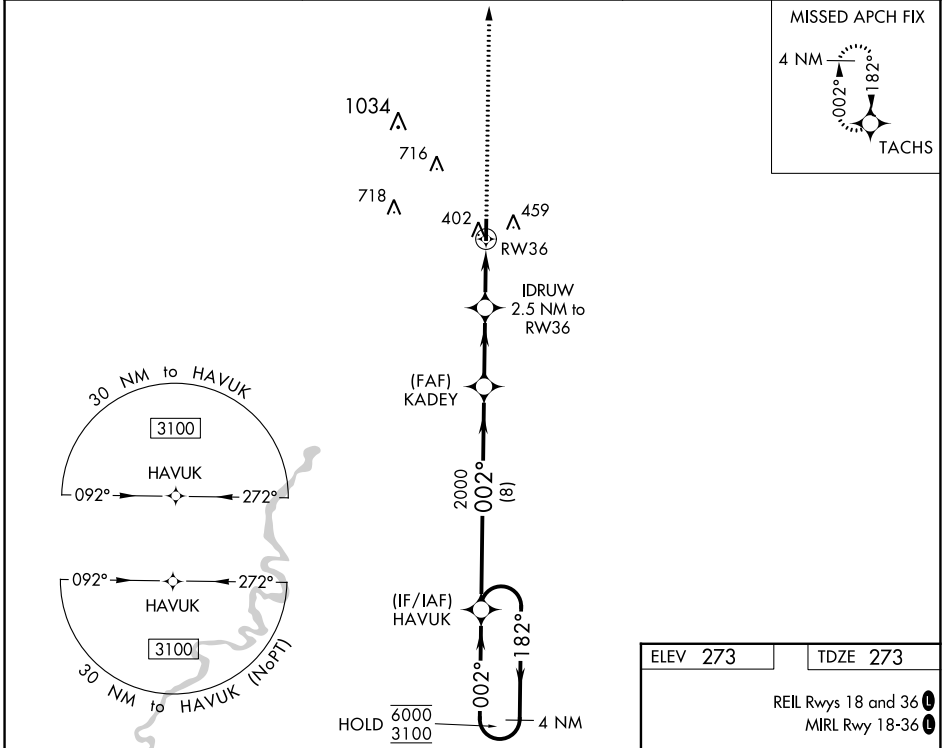


WAAS CH <b>56342</b> <b>W36A</b>	APP CRS <b>002°</b>	Rwy Idg <b>4000</b> TDZE <b>273</b> Apt Elev <b>273</b>
--	------------------------	---

# RNAV (GPS) RWY 36

POCAHONTAS MUNI (M7)

RNP APCH. ▼ ▲ Rwy 36 helicopter visibility reduction below ¼ SM NA. Baro-VNAV NA. Use Walnut Ridge altimeter setting.		MISSED APPROACH: Climb to 3100 direct TACHS and hold.
ARG AWOS-3PT <b>126.525</b>	MEMPHIS CENTER <b>120.075 289.4</b>	UNICOM <b>122.8 (CTAF)</b>



SC-1, 05 SEP 2024 to 03 OCT 2024

SC-1, 05 SEP 2024 to 03 OCT 2024

ELEV 273	TDZE 273
REIL Rws 18 and 36 MIRL Rwy 18-36	

4 NM Holding Pattern	HAVUK	3100	TACHS	
6000 ← 182°	3100 → 002°	2000	*LNAV only.	
GP 3.00°	TCH 40	2000	*1100	
8 NM		2.8 NM	2.5 NM	
CATEGORY	A	B	C	D
LPV DA	541-1 268 (300-1)			
LNAV/VNAV DA	583-1 310 (400-1)			
LNAV MDA	680-1 407 (500-1)		680-1½ 407 (600-1½)	
◼ CIRCLING	900-1 627 (700-1)		1100-2½ 827 (900-2½)	
			1100-2¾ 827 (900-2¾)	