

(LVD3.LVD) 23334

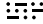
LEVEL ISLAND THREE DEPARTURE (OBSTACLE)

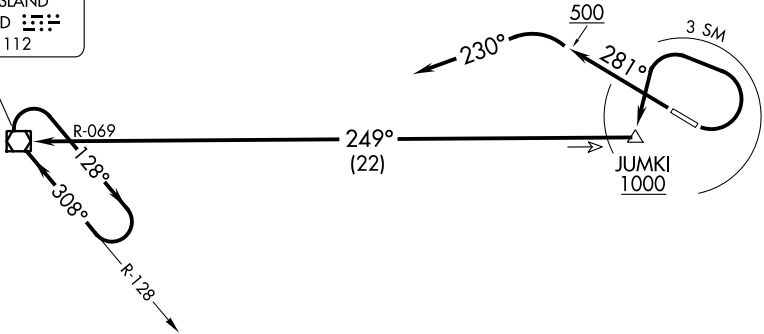
WRANGELL (WRG) (PAWG)

AL-5874 (FAA)

WRANGELL, ALASKA

ANCHORAGE CENTER
118.0
SITKA RADIO
122.45
CTAF
122.6

LEVEL ISLAND
116.5 LVD 
Chan 112



TAKEOFF MINIMUMS

Rwy 10: 1000-3.

Rwy 28: Standard with minimum climb of 280' per NM to 1100.

TAKEOFF OBSTACLE NOTES

Rwy 10: Trees and rising terrain beginning 52' from DER, 253' right of centerline, up to 148' AGL/1241' MSL.

Rwy 28: Trees and rising terrain beginning 84' from DER, 266' left of centerline, up to 23' AGL/122' MSL.

NOTE: Rwy 10, DME required.

NOTE: Rapidly rising terrain south/southwest and east/northeast of airport to above 2500' within 3 miles of airport.

NOTE: Chart not to scale.

DEPARTURE ROUTE DESCRIPTION

TAKEOFF RUNWAY 10: Turn left as soon as practicable, climb in visual conditions until established on LVD R-069 at JUMKI/LVD 22 DME fix on a westerly course (visual conditions must be maintained from takeoff until established over JUMKI at/above 1000). Cross JUMKI at or above 1000 then climb on LVD R-069 to LVD VOR/DME. Thence

TAKEOFF RUNWAY 28: Climb heading 281° to 500 then climbing left turn heading 230° to intercept LVD R-069 to LVD VOR/DME. Do not exceed 180K until established on LVD R-069 westbound. Thence

. . . . continue climb in hold to MEA for route of flight.

LEVEL ISLAND THREE DEPARTURE (OBSTACLE)

(LVD3.LVD) 17AUG17

WRANGELL, ALASKA
WRANGELL (WRG) (PAWG)

AK, 05 SEP 2024 to 31 OCT 2024

AK, 05 SEP 2024 to 31 OCT 2024