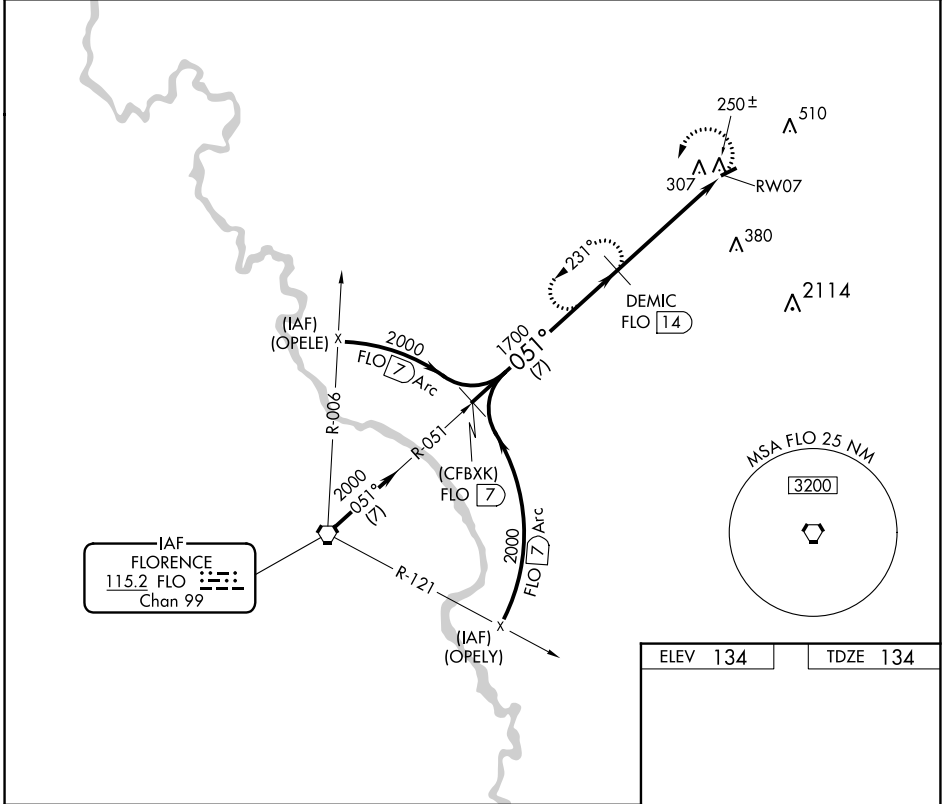


VORTAC FLO 115.2 Chan 99	APP CRS 051°	Rwy Idg 3000 TDZE 134 Apt Elev 134
--	------------------------	---

VOR/DME or GPS RWY 7

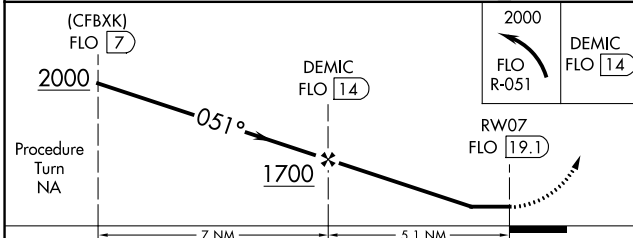
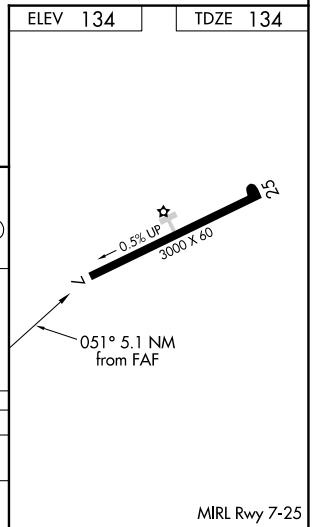
DILLON COUNTY (DLC)

<p>▼ ▲NA</p> <p>Use Florence altimeter setting.</p>	<p>MISSED APPROACH: Climbing left turn to 2000 via FLO R-051 to DEMIC 14 DME and hold.</p>
<p>FLORENCE APP CON ★</p> <p>118.6 341.7</p>	<p>CTAF</p> <p>122.9</p>



SE-2, 05 SEP 2024 to 03 OCT 2024

SE-2, 05 SEP 2024 to 03 OCT 2024



CATEGORY	A	B	C	D
S-7	660-1	526 (600-1)	660-1½ 526 (600-1½)	NA
CIRCLING	700-1	566 (600-1)	700-1½ 566 (600-1½)	NA