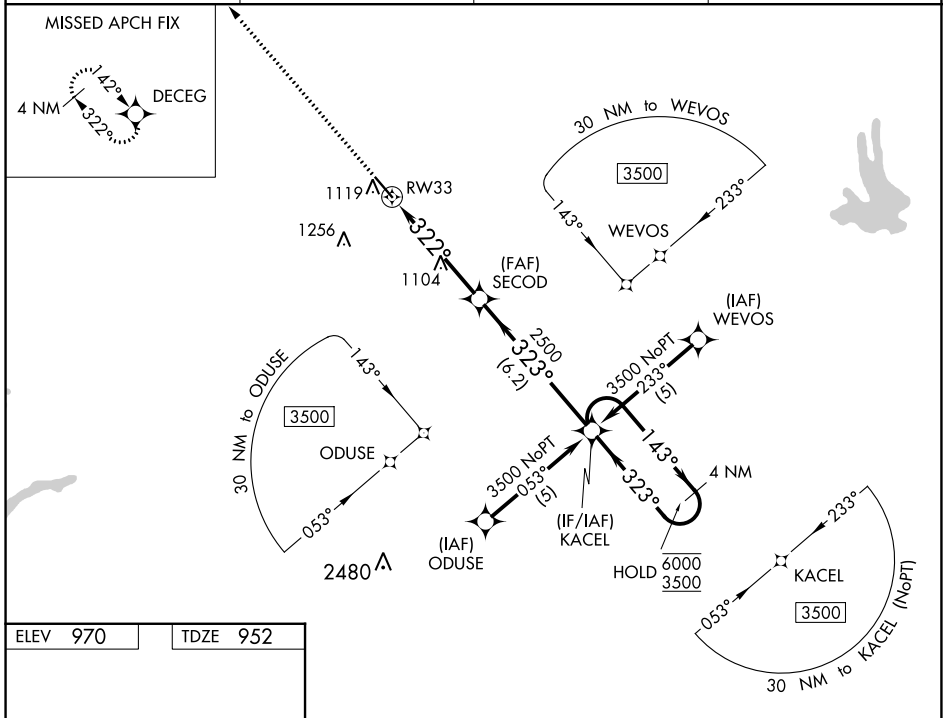


WAAS CH <b>77528</b> <b>W33A</b>	APP CRS <b>322°</b>	Rwy Idg TDZE <b>5500</b> <b>952</b> Apt Elev <b>970</b>
--	------------------------	--

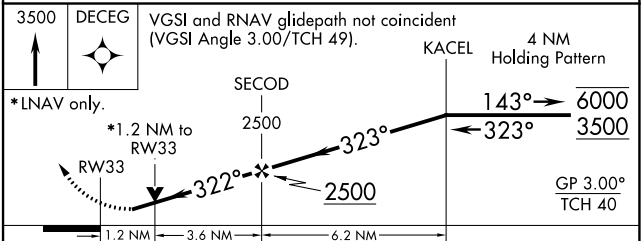
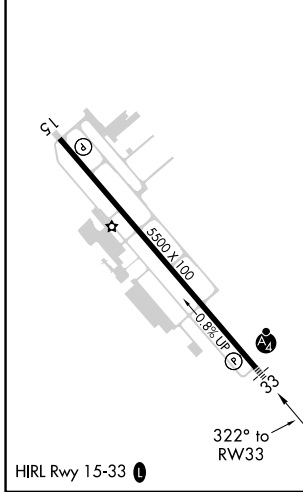
# RNAV (GPS) RWY 33

NEWNAN COWETA COUNTY (CCO)

RNP APCH.		MALSF	MISSED APPROACH: Climb to 3500 direct DECEG and hold.
AWOS-3PT <b>118.975</b>	ATLANTA APP CON <b>119.8 354.125</b>	GCO <b>121.725</b>	UNICOM <b>122.7 (CTAF) 0</b>



ELEV 970	TDZE 952
----------	----------



CATEGORY	A	B	C	D
LPV DA		1242-1	290 (300-1)	
LNAV/VNAV DA		1286-1	334 (400-1)	
LNAV MDA		1360-1	408 (400-1)	
<input checked="" type="checkbox"/> CIRCLING	1420-1	450 (500-1)	1560-1½ 590 (600-1½)	1560-2 590 (600-2)

SE-4, 05 SEP 2024 to 03 OCT 2024

SE-4, 05 SEP 2024 to 03 OCT 2024