

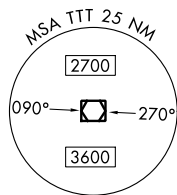
JOE POOL SEVEN DEPARTURE

REGIONAL DEP CON
125.2 343.65
CTAF
122.7

RADAR and DME required.

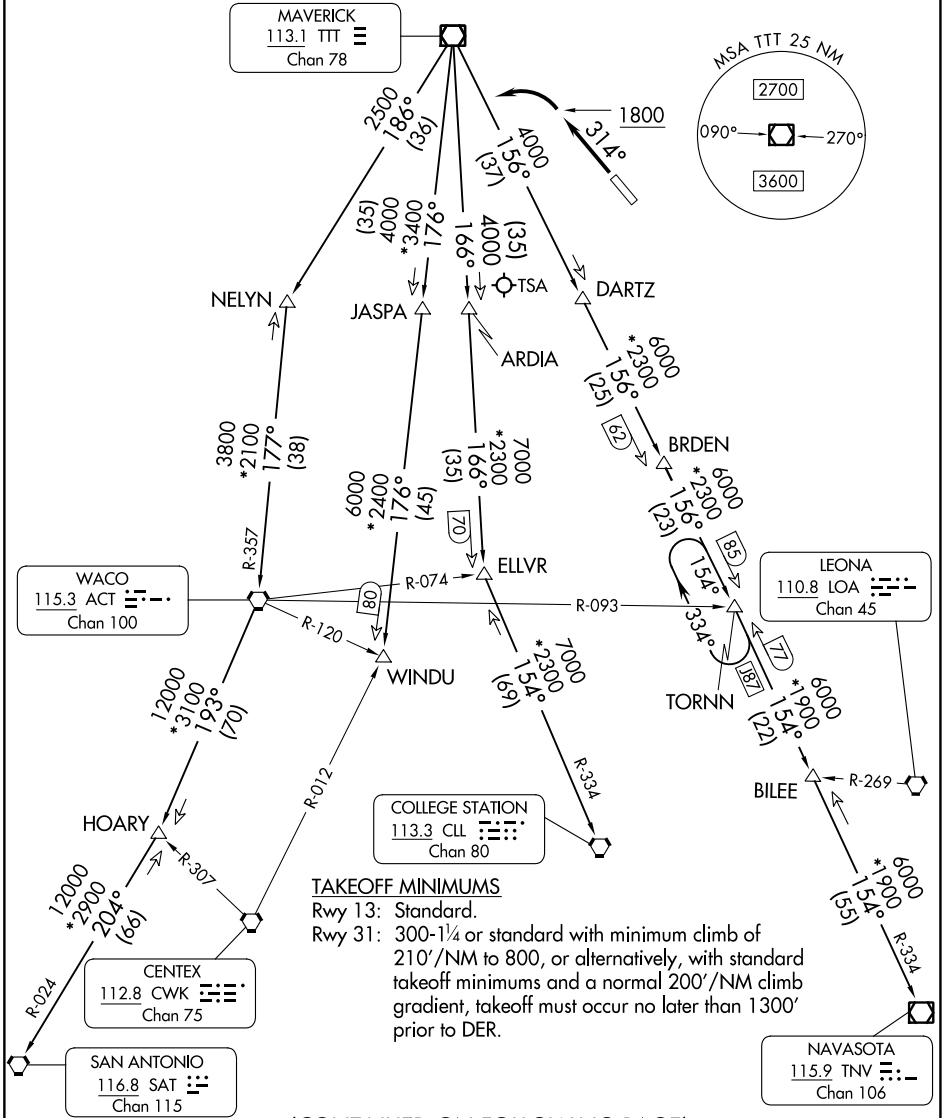
**TOP ALTITUDE:
ASSIGNED BY ATC**

MAVERICK
113.1 TTT
Chan 78



SC-2, 05 SEP 2024 to 03 OCT 2024

SC-2, 05 SEP 2024 to 03 OCT 2024



TAKEOFF MINIMUMS

Rwy 13: Standard.
 Rwy 31: 300-1¼ or standard with minimum climb of 210'/NM to 800, or alternatively, with standard takeoff minimums and a normal 200'/NM climb gradient, takeoff must occur no later than 1300' prior to DER.

(CONTINUED ON FOLLOWING PAGE)

NOTE: Chart not to scale.

JOE POOL SEVEN DEPARTURE