

CHESTER, SOUTH CAROLINA

AL-5954 (FAA)

24249

NDB DCM 220	APP CRS 340°	Rwy ldg TDZE Apt Elev	5000 648 657
-----------------------	------------------------	-----------------------------	---

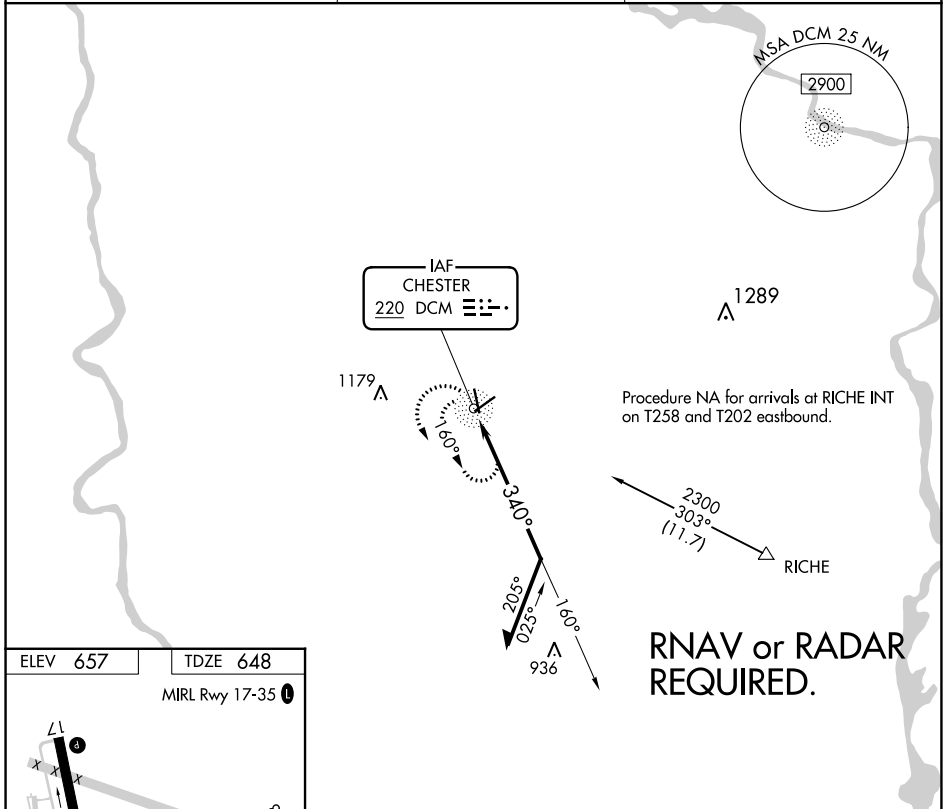
NDB RWY 35

CHESTER CATAWBA RGNL (DCM)

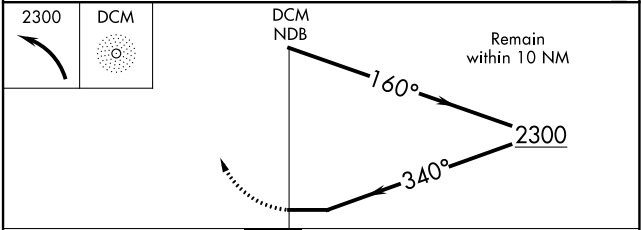
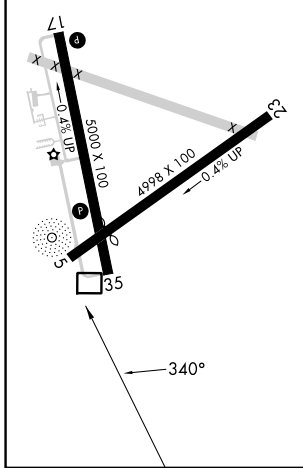
⚠ Circling to Rwy 5/23 NA, at night. Rwy 35 helicopter visibility reduction below $\frac{3}{4}$ SM NA. When local altimeter setting not received, use UZA altimeter setting and increase all MDAs 40 feet.

⚠ MISSED APPROACH: Climbing left turn to 2300 in DCM NDB holding pattern.

AWOS-3 120.975	CHARLOTTE APP CON 120.05 307.8	UNICOM 122.7 (CTAF) 0
--------------------------	--	---------------------------------



ELEV 657	TDZE 648
----------	----------



CATEGORY	A	B	C	D
S-35	1340-1	692 (700-1)	1340-2	692 (700-2)
CIRCLING	1340-1	683 (700-1)	1340-2 683 (700-2)	1480-2 $\frac{3}{4}$ 823 (900-2 $\frac{3}{4}$)

CHESTER, SOUTH CAROLINA
Amdt 3 05SEP24

34°47'N-81°12'W

CHESTER CATAWBA RGNL (DCM)
NDB RWY 35

SE-2, 05 SEP 2024 to 03 OCT 2024

SE-2, 05 SEP 2024 to 03 OCT 2024