

WAAS CH <b>93818</b> <b>W17A</b>	APP CRS <b>174°</b>	Rwy Idg TDZE Apt Elev	<b>5000</b> <b>657</b> <b>657</b>
--	------------------------	-----------------------------	---

# RNAV (GPS) RWY 17

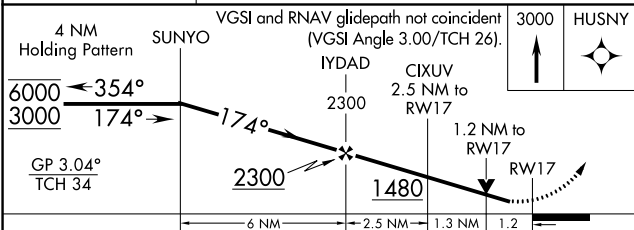
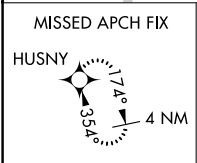
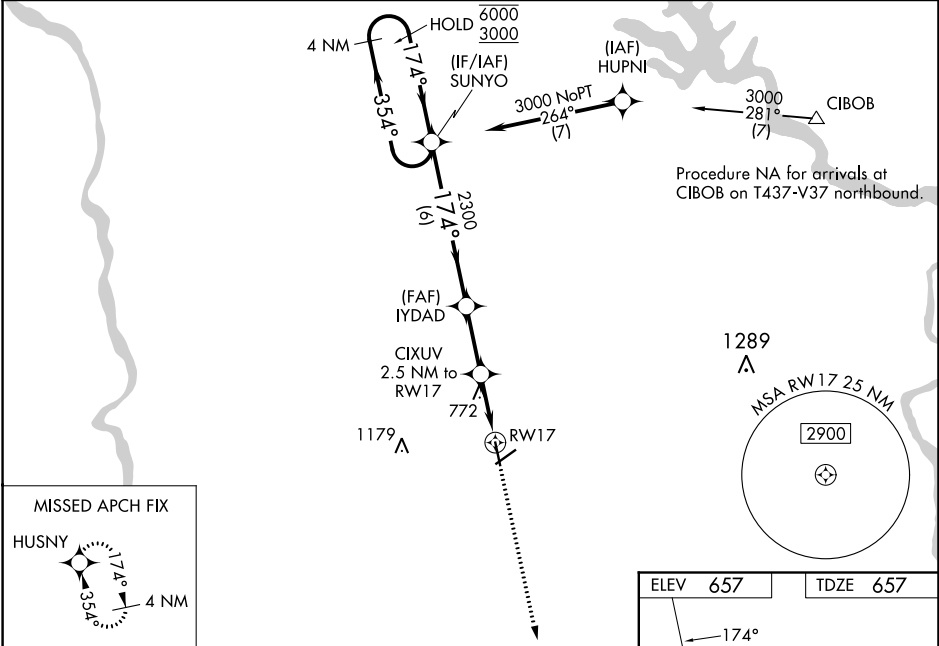
CHESTER CATAWBA RGNL (DCM)

RNP APCH-GPS.

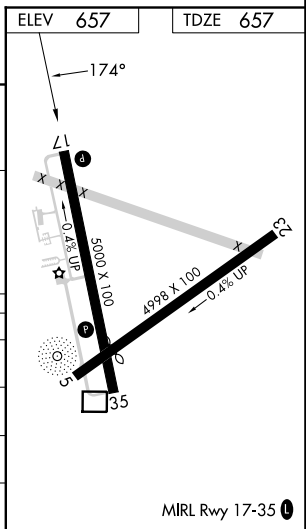
- ▼ For uncompensated Baro-VNAV systems, LNAV/VNAV NA below -16°C or above 54°C.
- ▲ Circling to Rwy 5-23 NA at night. Rwy 17 helicopter visibility reduction below ¼ SM NA.
- Baro-VNAV and VDP NA when using UZA altimeter setting. When local altimeter setting not received, use UZA altimeter setting and increase LPV DA to 940 feet and all visibilities ½ SM. Increase LNAV/VNAV DA to 1167 feet; increase all MDAs 40 feet and LNAV visibility Cat C/D ¼ SM.

MISSED APPROACH:  
Climb to 3000 direct  
HUSNY and hold.

AWOS-3 <b>120.975</b>	CHARLOTTE APP CON <b>120.05 307.8</b>	UNICOM <b>122.7 (CTAF) 0</b>
--------------------------	--	---------------------------------



CATEGORY	A	B	C	D
LPV DA		907-¾	250 (300-¾)	
LNAV/VNAV DA		1134-1¾	477 (500-1¾)	
LNAV MDA	1060-1	403 (500-1)	1060-1½	403 (500-1½)
CIRCLING	1160-1	503 (600-1)	1280-1¾ 623 (700-1¾)	1480-2¾ 823 (900-2¾)



SE-2, 05 SEP 2024 to 03 OCT 2024

SE-2, 05 SEP 2024 to 03 OCT 2024